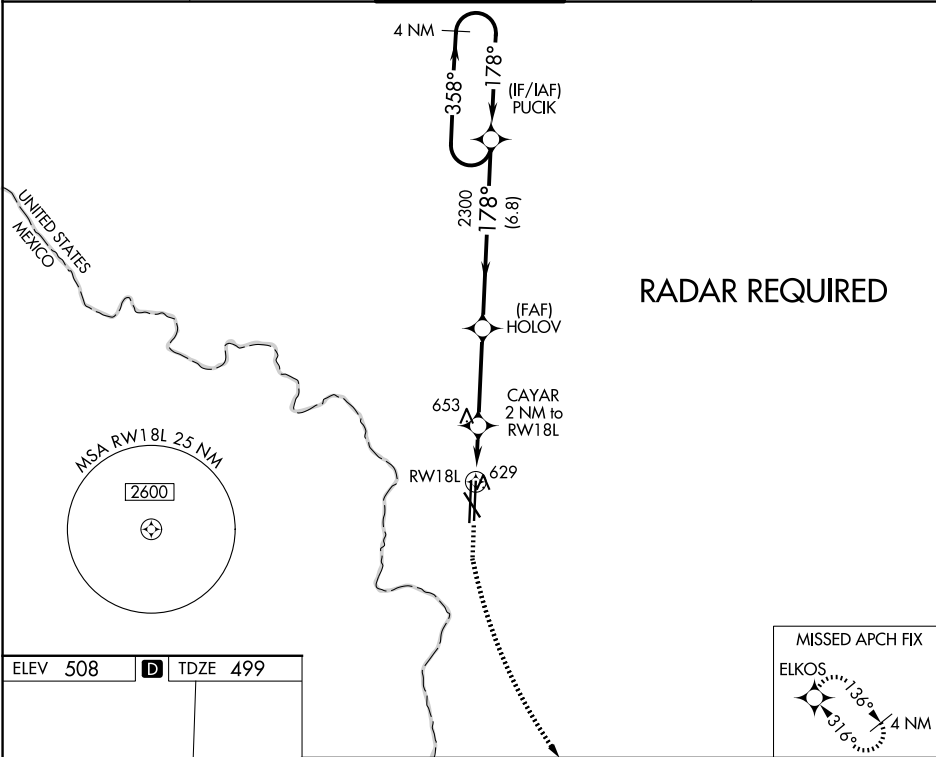


WAAS Ch 77899 W18B	APP CRS 178°	Rwy Ldg TDZE 499 Apt Elev 508
--	------------------------	---

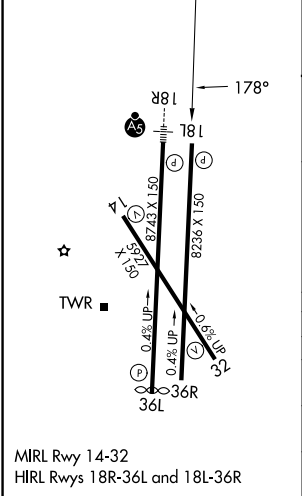
RNAV (GPS) RWY 18L
LAREDO INTL (L.R.D)

T A For uncompensated Baro-VNAV systems, LNAV/VNAV NA below 1°C (34°F) or above 54°C (130°F). Circling NA west of Rwy 14 and 36L. DME/DME RNP-0.3 NA.	MISSED APPROACH: Climb to 1000 then climbing left turn to 2500 direct ELKOS and hold.
--	---

ATIS 125.775	HOUSTON CENTER 127.8 307.2	LAREDO TOWER ★ 120.1(CTAF) 257.9	GND CON 121.8	UNICOM 122.95
------------------------	--------------------------------------	--	-------------------------	-------------------------



ELEV 508	D	TDZE 499
----------	----------	----------



1000	2500	ELKOS	HOLOV	PUCK	4 NM Holding Pattern
*LNAV only	CAYAR 2 NM to RW18L	*1 NM to RW18L	2300	358°	3000
RW18L	1180*	2300	178°	178°	GP 3.00° TCH 51
1 NM	1 NM	3.5 NM	6.8 NM		
CATEGORY	A	B	C	D	E
LPV DA	699-3/4 200 (200-3/4)				
LNAV/VNAV DA	810-7/8 311 (400-7/8)				
LNAV MDA	880-1	381 (400-1)	880-1 1/8	381 (400-1 1/8)	
CIRCLING	940-1 432 (500-1)	980-1 472 (500-1)	1100-1 1/2 592 (600-1 1/2)	1200-2 1/4 692 (700-2 1/4)	1200-2 1/2 692 (700-2 1/2)