

LAREDO, TEXAS

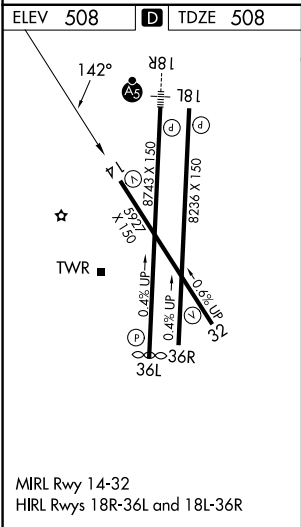
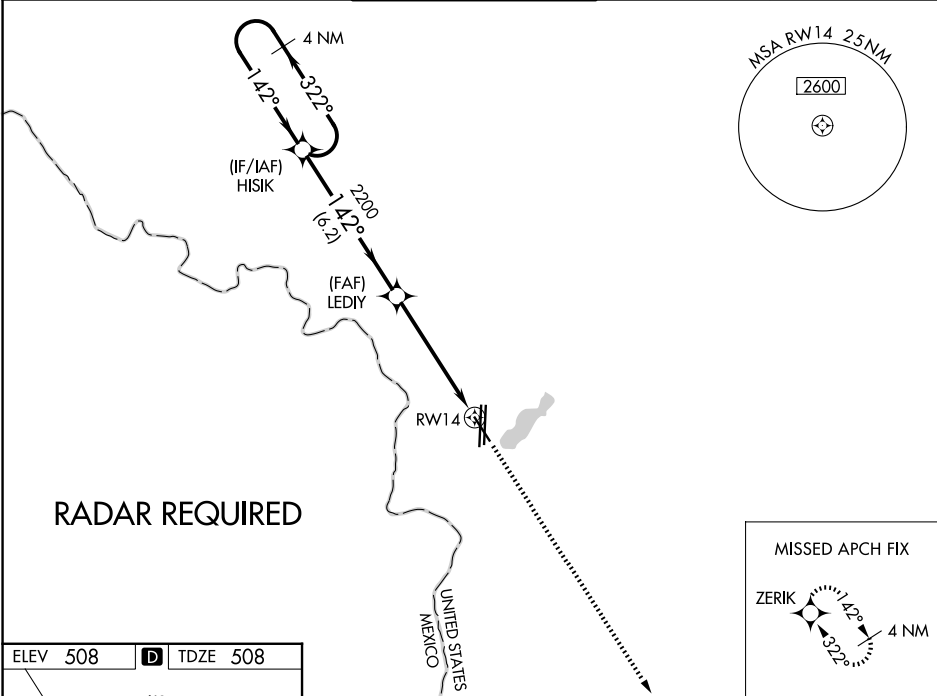
AL-226 (FAA)

25219

WAAS CH 65841 W14A	APP CRS 142°	Rwy Ldg TDZE 508 Apt Elev 508
--	------------------------	---

RNAV (GPS) RWY 14
LAREDO INTL (L.R.D)

<div><div><div></div><div></div></div><div><div></div><div></div></div></div> <div>For uncompensated Baro-VNAV systems, LNAV/VNAV NA below 1°C (34°F) or above 54°C (130°F). Circling NA west of Rwys 14 and 36L. DME/DME RNP-0.3 NA.</div>	MISSED APPROACH: Climb to 2500 direct ZERIK and hold.			
ATIS 125.775	HOUSTON CENTER 127.8 307.2	LAREDO TOWER★ 120.1(CTAF)0 257.9	GND CON 121.8	UNICOM 122.95



4 NM Holding Pattern		HISIK		LEDIY		2500		ZERIK	
3000		322°		142°		2200		*1.3 NM to RWY14	
GP 3.00°		TCH 55		2200		6.2 NM		3.9 NM	
CATEGORY		A		B		C		D	
LPV DA		758-3/4		250 (300-3/4)					
LNAV/VNAV DA		810-7/8		302 (400-7/8)					
LNAV MDA		960-1		452 (500-1)		960-1 3/8		452 (500-1 3/8)	
CIRCLING		960-1		980-1		1100-1 1/2		1200-2 1/4	
		452 (500-1)		472 (500-1)		592 (600-1 1/2)		692 (700-2 1/4)	

LAREDO, TEXAS
Amdt 1 01FEB18

27°33'N-99°28'W

LAREDO INTL (L.R.D)
RNAV (GPS) RWY 14

SC-3, 07 AUG 2025 to 04 SEP 2025

SC-3, 07 AUG 2025 to 04 SEP 2025