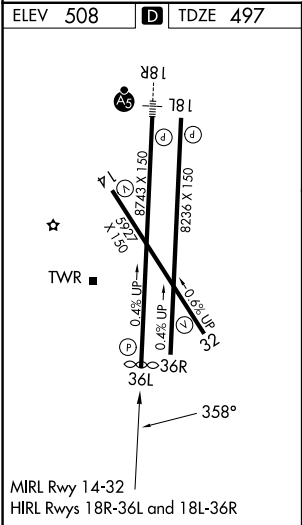
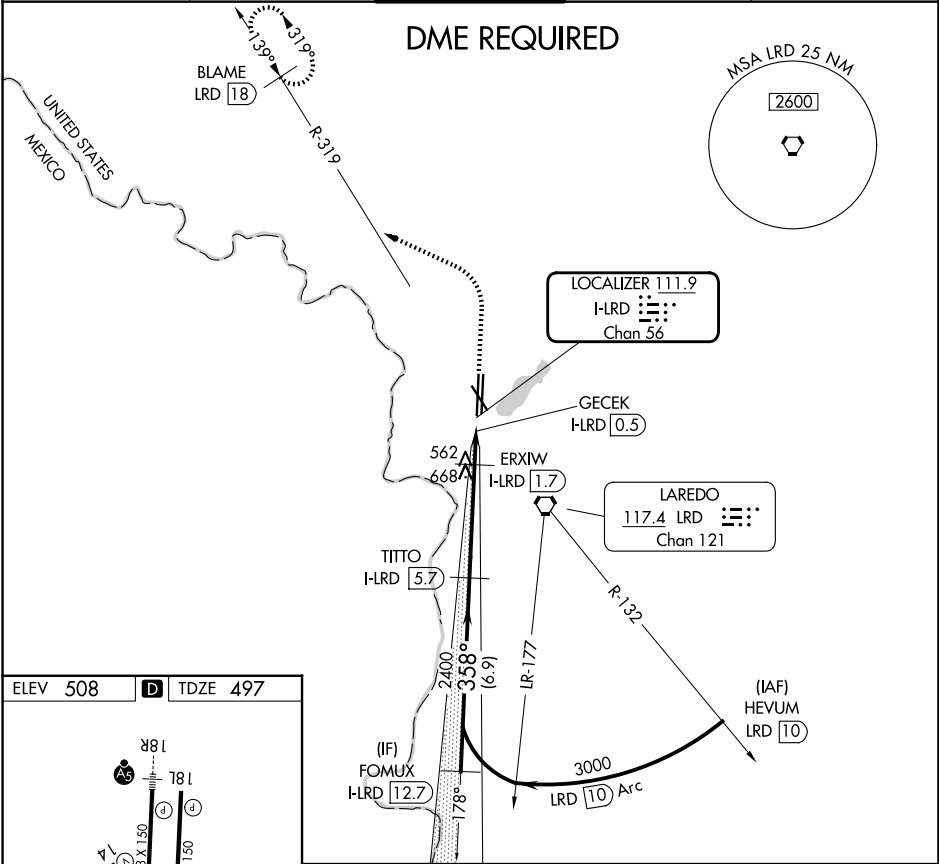


LOC/DME I-LRD	APP CRS	Rwy Ldg	8623
111.9	358°	TDZE	497
Chan 56		Apt Elev	508

LOC BC RWY 36L
LAREDO INTL (L.R.D)

<div><div></div><div></div></div> <div>Circling NA west of Rwys 14 and 36L. DME required.</div>	MISSED APPROACH: Climb to 1100 then climbing left turn to 2600 on heading 290° and on LRD VORTAC R-319 to BLAME/LRD 18 DME and hold.
---	--

ATIS 125.775	HOUSTON CENTER 127.8 307.2	LAREDO TOWER ★ 120.1(CTAF) 257.9	GND CON 121.8	UNICOM 122.95
-----------------	-------------------------------	-------------------------------------	------------------	------------------



FOMUX I-LRD 12.7	Use I-LRD DME when on the localizer course.	1100	2600	LRD R-319	BLAME LRD 18
3000	358°	TITTO I-LRD 5.7	2400	3.00° TCH 50	ERXIW I-LRD 1.7
Disregard glide slope indications.			1100	GECEK I-LRD 0.5	
	6.9 NM	4.1 NM	1.2 NM	0.6	
CATEGORY	A	B	C	D	E
S-LOC 36L	820-1	323 (400-1)			
CIRCLING	940-1 432 (500-1)	980-1 472 (500-1)	1100-1½ 592 (600-1½)	1200-2¼ 692 (700-2¼)	1200-2½ 692 (700-2½)