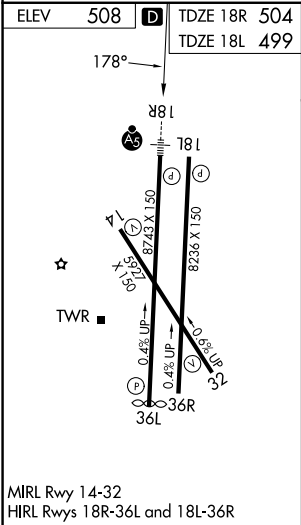
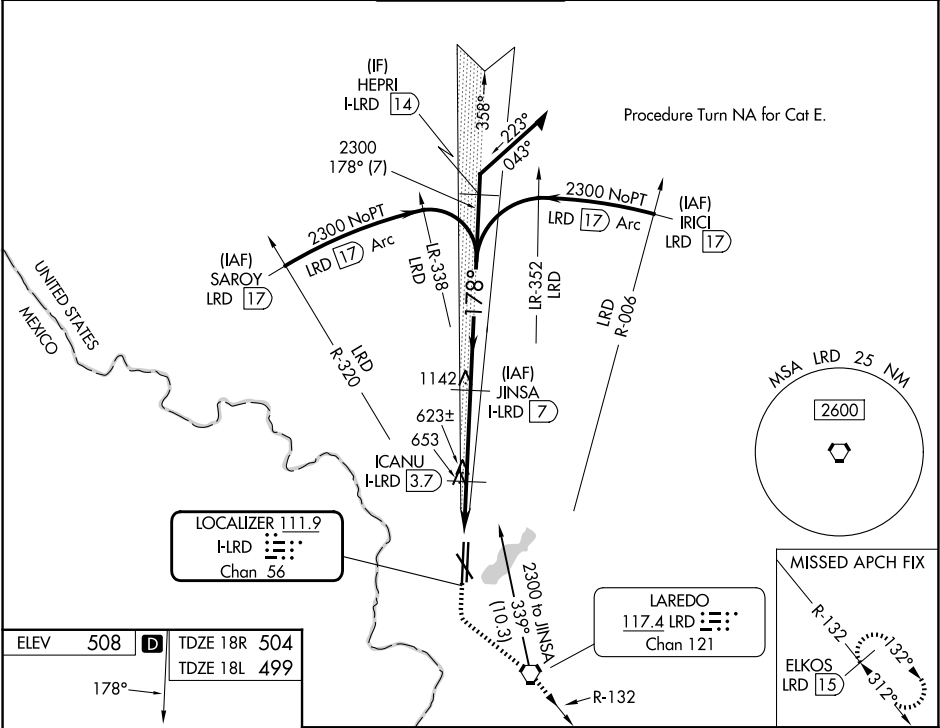


| | | | |
|---------------|---------|--------------|------|
| LOC/DME I-LRD | APP CRS | 18R | 18L |
| 111.9 | 178° | Rwy Ldg 8743 | 8236 |
| Chan 56 | | TDZE 504 | 499 |
| | | Apt Elev 508 | 508 |

ILS or LOC RWY 18R
LAREDO INTL (L.R.D)

| | | | | |
|-----------------|---|---------------------------------------|--|------------------|
| DME required. | | MALSR | MISSED APPROACH: Climb to 1100 then climbing left turn to 2500 direct LRD VORTAC and on LRD VORTAC R-132 to ELKOS/LRD 15 DME and hold. | |
| | Circling NA southwest of Rwy 14 and west of Rwy 36L. For inop ALS, increase S-ILS 18R Cat E visibility to ¾ SM and increase S-LOC 18R Cat C, D, and E visibility to 1½ SM. | | | |
| ATIS 125.775 | HOUSTON CENTER 127.8 307.2 | LAREDO TOWER ★ 120.1(CTAF) 0 257.9 | GND CON 121.8 | UNICOM 122.95 |



| | | | | | |
|--------------------------------------|-------------|---|--------------|---|--------------|
| ELEV 508 D TDZE 18R 504 TDZE 18L 499 | | 1100 2500 LRD ELKOS LRD 15 | | VGSI and ILS glidepath not coincident (VGSI Angle 3.00/TCH 50). | |
| 178° | | Use I-LRD DME when on the localizer course. | | Remain within 10 NM | |
| 1260 | | ICANU I-LRD 3.7 | | 2300 358° 2300 | |
| 1.2 NM | | 1.1 NM | | 3.3 NM | |
| CATEGORY | A | B | C | D | E |
| S-ILS 18R | 704-½ | | 200 (200-½) | | |
| S-LOC 18R | 920-½ | 416 (500-½) | 920-¾ | 416 (500-¾) | |
| SIDESTEP 18L | 920-1 | 421 (500-1) | 920-1½ | 920-2 | 421 (500-2) |
| CIRCLING | 940-1 | 980-1 | 1100-1½ | 1200-2¼ | 1200-2½ |
| | 432 (500-1) | 472 (500-1) | 592 (600-1½) | 692 (700-2¼) | 692 (700-2½) |