

WAAS
CH **72825**
W21A

APP CRS
213°

Rwy Idg
TDZE
7277
Apt Elev
7284

RNAV (GPS) RWY 21
LARAMIE RGNL (L.A.R.)

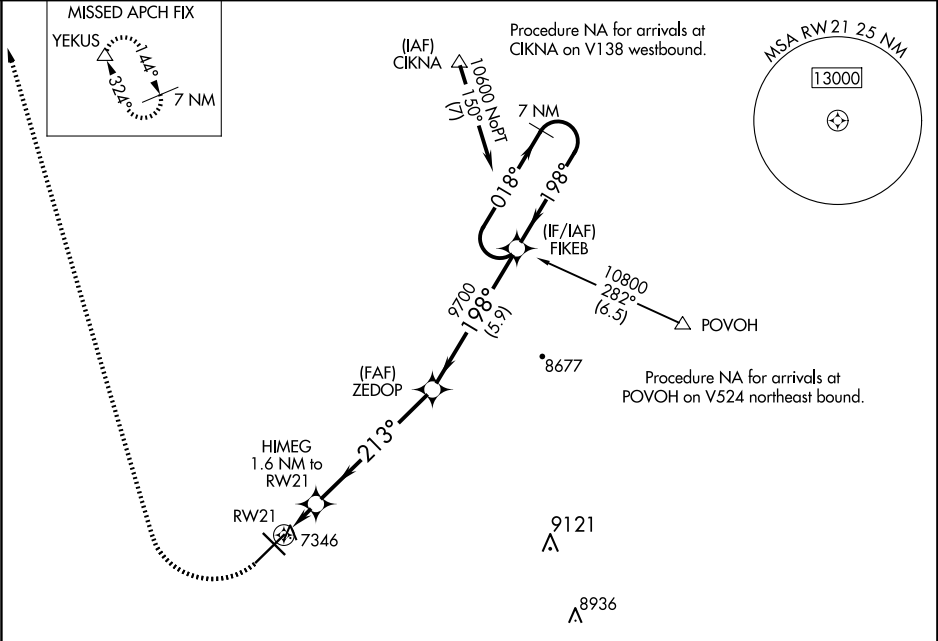
Circling to Rwy 30 NA at night.
Baro-VNAV NA.
DME/DME RNP-0.3 NA.

MISSED APPROACH: Climbing right turn to 9400
direct YEKUS and hold.

ASOS
135.475

DENVER CENTER
125.9 284.7

UNICOM
123.05 (CTAF) **0**



ELEV **7284** **D** TDZE **7277**

9400
YEKUS
△
*LNAV only.

HIMEG
1.6 NM to
RW21
*0.9 NM to
RW21
RW21
7820*
213°
9700
ZEDOP
198°
FIKEB
7 NM
Holding Pattern
018°
198°
10600
GP 3.00°
TCH 53

CATEGORY	A	B	C	D
LPV DA		7527-¾	250 (300-¾)	
LNAV/VNAV DA		7527-¾	250 (300-¾)	
LNAV MDA		7600-1	323 (400-1)	
CIRCLING	7660-1 376 (400-1)	7760-1 476 (500-1)	7880-1½ 596 (600-1½)	7920-2 636 (700-2)

REIL Rwy 3, 12 and 21 **0**
MIRL Rwy 3-21 and 12-30 **0**