

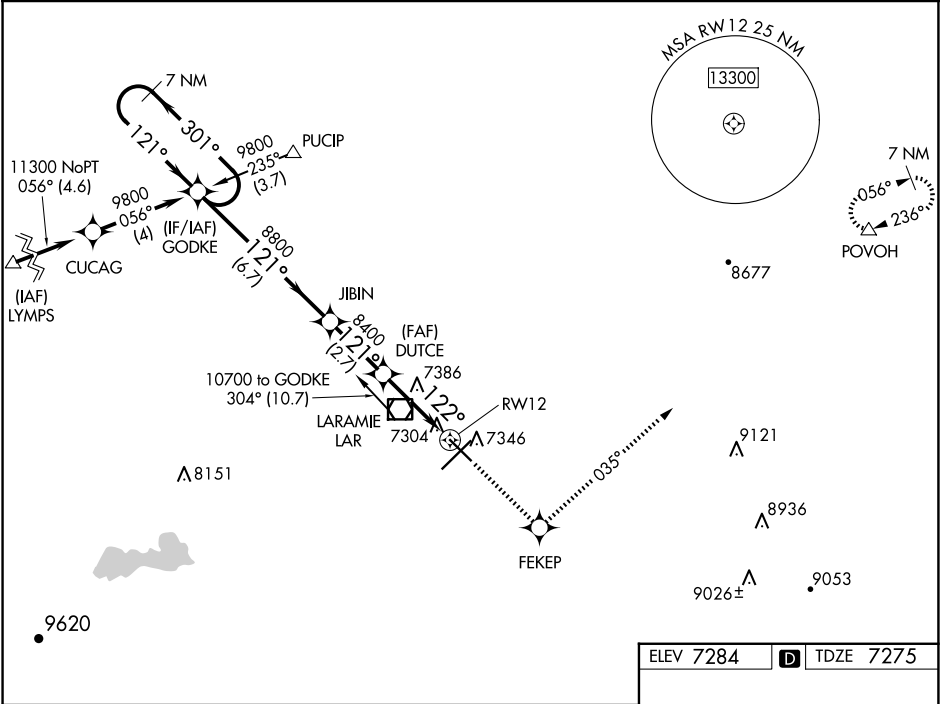
WAAS CH 70600 W12A	APP CRS 122°	Rwy Idg TDZE Apt Elev 6301 7275 7284
--	------------------------	--

RNAV (GPS) RWY 12

LARAMIE RGNL (LAR)

RNP APCH-GPS. ▼ For uncompensated Baro-VNAV systems, LNAV/VNAV NA below -29°C or above 34°C.	MISSED APPROACH: Climb to 10700 direct FEKEP and via 035° track to POVOH and hold.
---	--

ASOS 135.475	DENVER CENTER 125.9 284.7	UNICOM 123.05 (CTAF) 0
------------------------	-------------------------------------	----------------------------------



7 NM Holding Pattern		10700		FEKEP	tr 035°	POVOH
9800		GODKE		JIBIN	DUTCE	1.2 NM to RW12
GP 3.00° TCH 43		8800		8400	122°	RW12
		6.7 NM		2.7 NM	2.2 NM	1.2
CATEGORY	A	B	C	D		
LPV DA	7525-¾		250 (300-¾)			
LNAV/VNAV DA	7622-1		347 (400-1)			
LNAV MDA	7700-1	425 (500-1)	7700-1¼	425 (500-1¼)		
CIRCLING	7700-1 416 (500-1)	7760-1 476 (500-1)	7880-1½ 596 (600-1½)	7920-2 636 (700-2)		

