

LOC I-CPQ	APP CRS	Rwy Ldg	<b>8506</b>
<b><u>111.7</u></b>	<b>096°</b>	TDZE	<b>861</b>
		Apt Elev	<b>861</b>

ILS or LOC RWY 10R  
CAPITAL REGION INTL (LAN)

**T** Circling Rwy 10L, 28R NA at night.  
**A** \*\* RVR 1800 authorized with use of  
FD or AP or HUD to DA.

MALSR



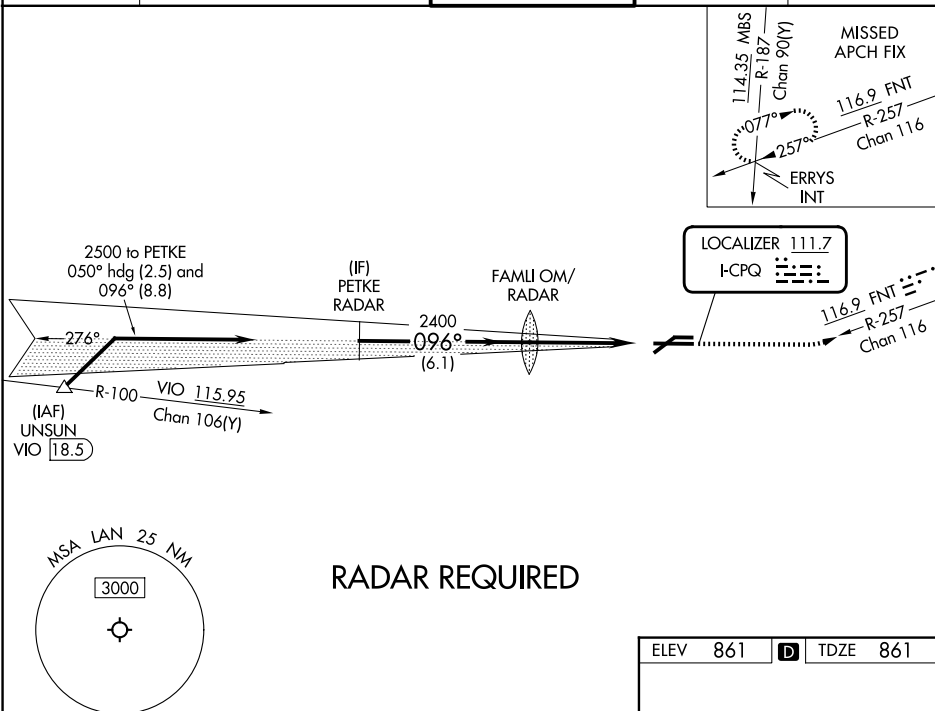
**MISSED APPROACH:** Climb to 2000 then climbing left turn to 2700 on heading 070° and on FNT VORTAC R-257 to ERRYS INT and hold.

ATIS  
119.75

GREAT LAKES APP CON ★  
118.65 226.4

LANSING TOWER  
119.9 240.9

GND CON  
121-9

CLNC DEL  
123.675

EC-1, 07 AUG 2025 to 04 SEP 2025

EC-1, 07 AUG 2025 to 04 SEP 2025

VGSI and ILS glidepath not coincident  
(VGSI Angle 3.00/TCH 73).

## PETRE RADAR

2000

2700

--	--

ERRYS

INT

100

### hda 070°

2500

FAMLI OM/

RAD.

2400

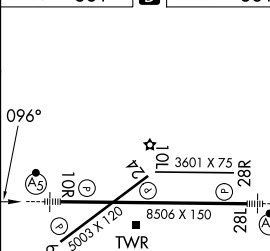
$$\frac{\text{GS } 3.00^\circ}{\text{TCH } 56}$$

2500 |

2400



ELEV	861	<b>D</b>	TDZE	861
------	-----	----------	------	-----



REIL Rwy 6 and 24  
HIRL Rwy 10R-28L  
MIRL Rwy 6-24

FAF to MAP 4.5 NM

Knots	60	90	120	150	180
Min:Sec	4:30	3:00	2:15	1:48	1:30

LANSGNG, MICHIGAN  
Amdt 11B 01FEB18

42°47'N-84°35'W

CAPITAL REGION INTL (LAN)  
ILS or LOC RWY 10R