

RNAV (GPS) RWY 24

LAKEHURST MAXFIELD FLD,
(JOINT BASE MC GUIRE DIX LAKEHURST) (KNEL)

WAAS Chan 60342 W24A	APCH CRS 242°	Rwy Idg 5002 TDZE 101 Arpt Elev 101
--	-------------------------	--

AL-223 [USN]

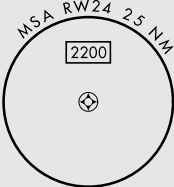
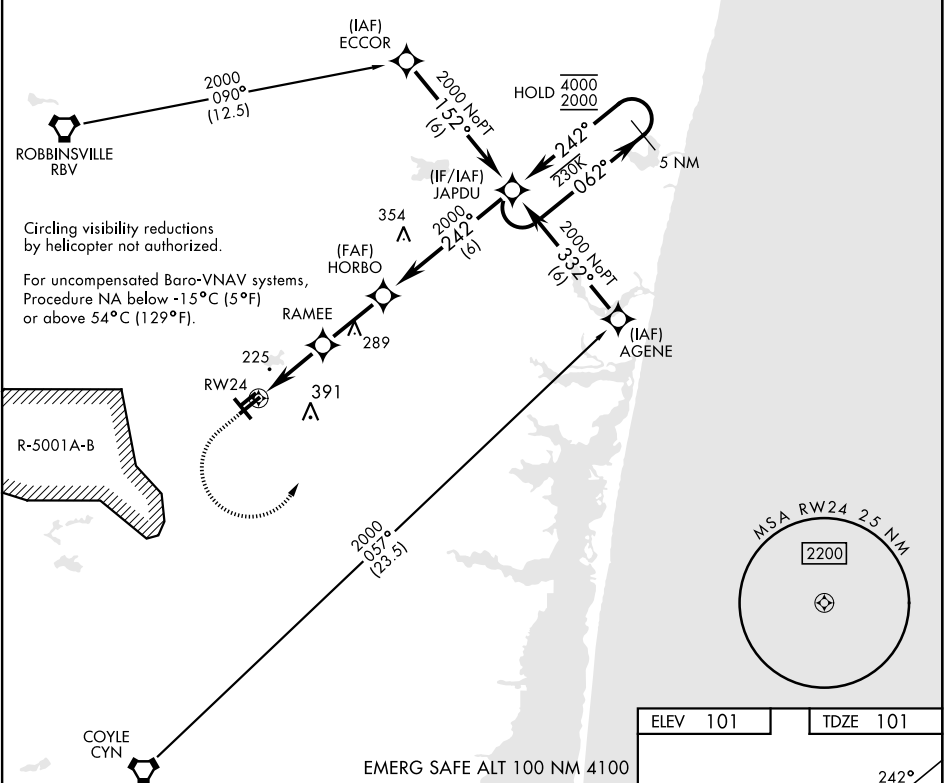
RNP APCH ▼ * When ALS inop, increase vis to ¾ mile. ** When ALS inop, increase vis to 1½ miles. *** When ALS inop, increase CAT AB vis to 1mile; CAT CD vis to 1¼ miles.

MALSR



MISSED APPROACH: Climb to 700 then climbing left turn to 2000 direct JAPDU and hold.

ATIS★ 276.525	MC GUIRE APP CON 126.475 363.8	TOWER★ 127.775 360.2	GND CON 118.375 307.375
-------------------------	--	--------------------------------	-----------------------------------



700	2000	JAPDU				
-----	------	-------	--	--	--	--

