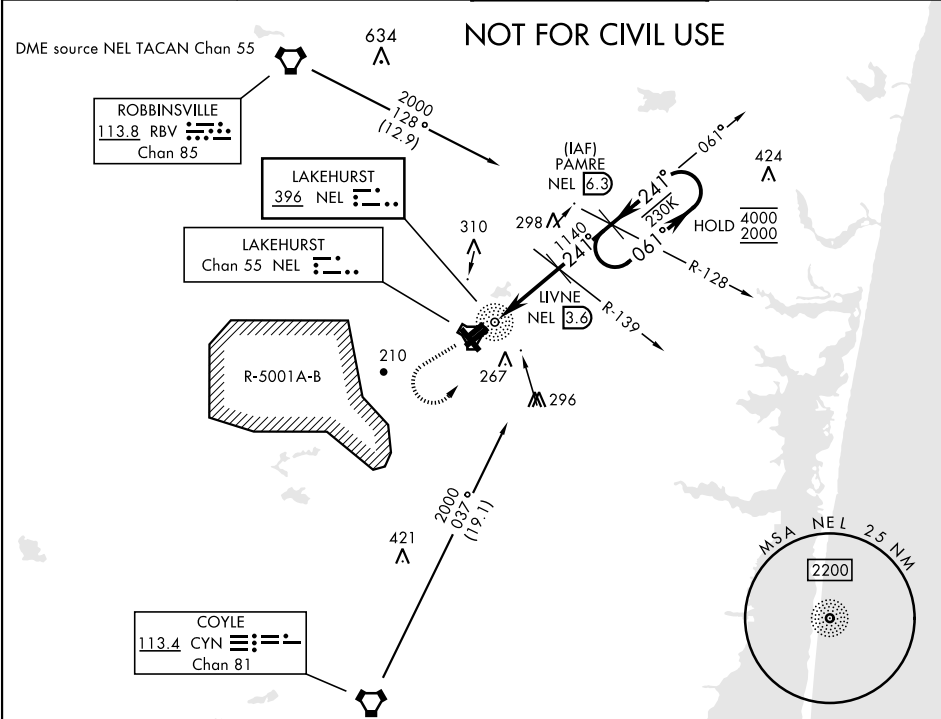


NDB NEL <b>396</b>	APCH CRS <b>241°</b>	Rwy Idg TDZE Arpt Elev <b>5002</b> <b>101</b> <b>101</b>	AL-223 [USN]	(JOINT BASE MC GUIRE DIX LAKEHURST) (KNEL)
-----------------------	-------------------------	---	--------------	--

<b>V</b> * When ALS inop, increase, CAT AB vis to 1 mile, CAT CD vis to 1¼ miles.	MALSR <b>A5</b>	MISSED APPROACH: Climb to 700, then climbing left turn to 2000 and intercept NEL NDB 061° bearing to PAMRE and hold.
---	--------------------	--

ATIS ★ <b>276.525</b>	MC GUIRE APP CON <b>126.475 363.8</b>	TOWER ★ <b>127.775 360.2</b>	GND CON <b>118.375 307.375</b>
--------------------------	--	---------------------------------	-----------------------------------



EMERG SAFE ALT 100 NM 4100					<div>ELEV 101</div> <div>TDZE 101</div>	
<div>700</div> <div>↑</div>	<div>2000</div> <div>NEL</div> <div>061°brg</div>	<div>PAMRE</div> <div>NEL 6.3</div>	<div></div>			
<div>TACAN</div> <div>NDB</div> <div>1.7</div> <div>241°</div> <div>1140</div> <div>3.00°</div> <div>TCH 51</div> <div>0.4</div> <div>2.7 NM</div> <div>2.7 NM</div>						
<div>PAMRE RBV R-128</div> <div>NEL 6.3</div> <div>One Minute Holding Pattern</div> <div>4000</div> <div>2000</div>						
CATEGORY	A	B	C	D		
S-24 *	540-¾		439	(500-¾)		
<div>C</div> CIRCLING	<div>660-1</div> <div>559 (600-1)</div>	<div>720-1</div> <div>619 (700-1)</div>	<div>720-1¾</div> <div>619 (700-1¾)</div>	<div>720-2</div> <div>619 (700-2)</div>		
<div>LAKEHURST MAXFIELD FLD, (JOINT BASE MC GUIRE DIX LAKEHURST) (KNEL) NDB RWY 24</div>						
<div>HIRL Rwy 6-24</div> <div>MIRL Rwy 063°-243°</div> <div>FAF to MAP 5.4 NM</div>						
<div>Knots</div> <div>60 90 120 150 180</div>						
<div>Min:Sec</div> <div>5:24 3:36 2:42 2:10 1:48</div>						

NE-2, 07 AUG 2025 to 04 SEP 2025

NE-2, 07 AUG 2025 to 04 SEP 2025