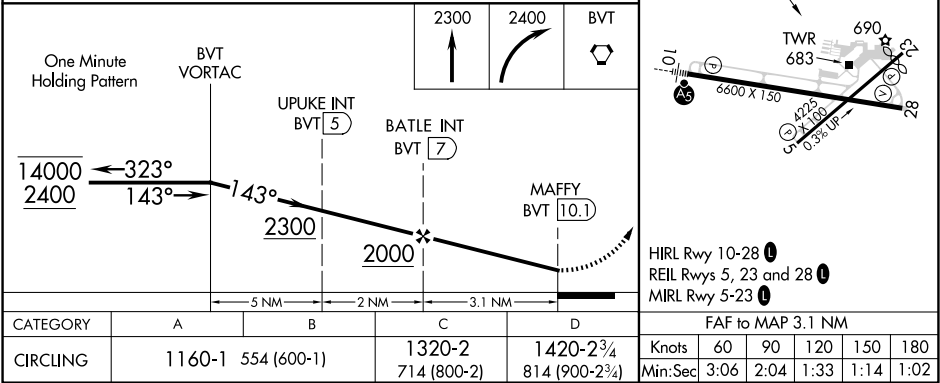
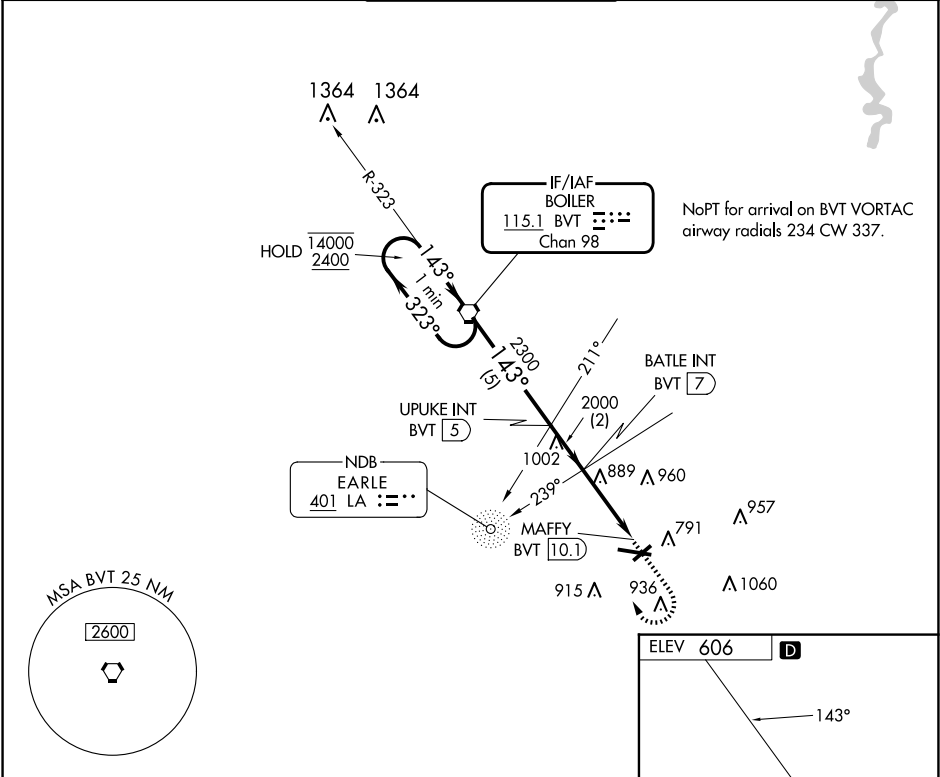


VORTAC BVT <b>115.1</b> Chan <b>98</b>	APP CRS <b>143°</b>	Rwy Idg TDZE Apt Elev	N/A N/A <b>606</b>
--	------------------------	-----------------------------	--------------------------

VOR-A

PURDUE UNIVERSITY (LAF')

ADF or DME required.		MISSED APPROACH: Climb to 2300 then climbing right turn to 2400 direct BVT VORTAC and hold.		
⚠ Circling Rwy 23 NA at night. ⚠ When local altimeter setting not received, use Vermilion Rgnl altimeter setting and increase all MDAs 100 feet and Cat C and D visibility ½ SM.				
ATIS <b>127.75</b>	GRISOM APP CON ★ <b>123.85 291.675</b>	LAFAYETTE TOWER ★ <b>119.6 (CTAF) 0 343.625</b>	GND CON <b>121.9 343.625</b>	UNICOM <b>122.95</b>



EC-2, 07 AUG 2025 to 04 SEP 2025

EC-2, 07 AUG 2025 to 04 SEP 2025