

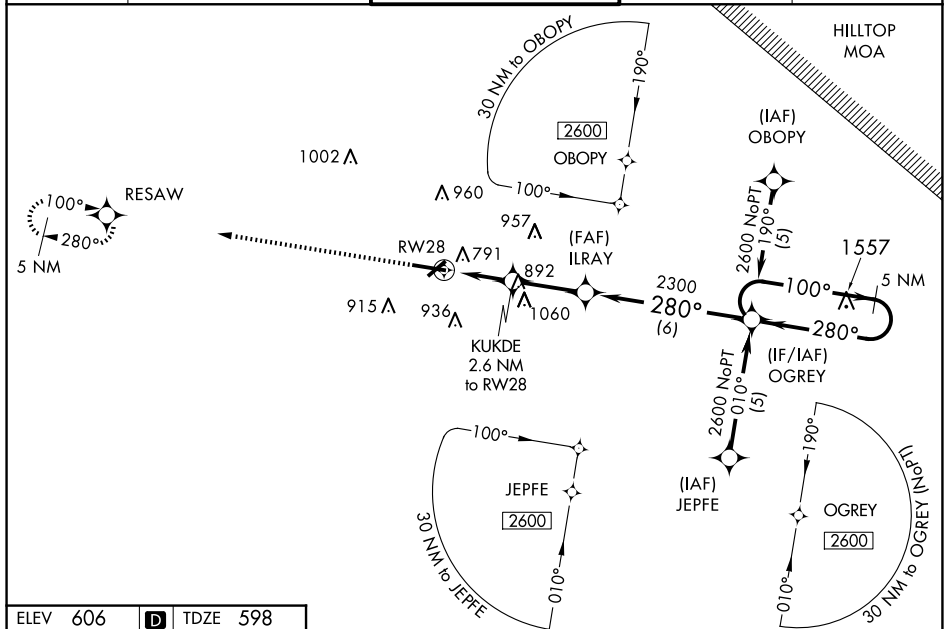
WAAS CH 82103 W28A	APP CRS 280°	Rwy Idg 6600 TDZE 598 Apt Elev 606
--	------------------------	---

RNAV (GPS) RWY 28
PURDUE UNIVERSITY (LAF)

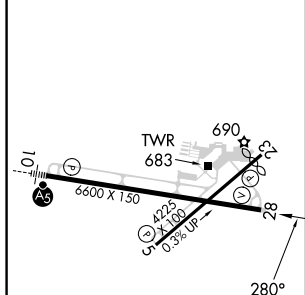
When local altimeter setting not received, use Vermilion Rgnl altimeter setting: increase LPV DA to 945 feet; increase LNAV/VNAV DA to 1214 feet; increase all MDAs 100 feet and LNAV Cts C/D visibility $\frac{1}{4}$ SM and Circling Cat C visibility $\frac{1}{2}$ SM, Cat D visibility $\frac{1}{4}$ SM. Baro-VNAV NA when using Vermilion Rgnl altimeter setting. For uncompensated Baro-VNAV systems, LNAV/VNAV NA below -16°C (4°F) or above 47°C (116°F). DME/DME RNP-0.3 NA. Rwy 28 helicopter visibility reduction below $\frac{3}{4}$ SM NA. Circling Rwy 23 NA at night.

MISSED APPROACH: Climb to 2600 direct RESAW and hold.

ATIS 127.75	GRISCOM APP CON ★ 123.85 291.675	LAFAYETTE TOWER ★ 119.6 (CTAF) 0 343.625	GND CON 121.9 343.625	UNICOM 122.95
-----------------------	--	--	---------------------------------	-------------------------



ELEV 606	D	TDZE 598
----------	----------	----------



***LNAV only**

KUKDE
2.6 NM
to RW28

RW28

IRLAY

OGREY

5 NM
Holding Pattern

100° →
← 280°

2600

GP 3.00°
TCH 46

CATEGORY	A	B	C	D
LPV DA	856-1 258 (300-1)			
LNAV/ VNAV DA	1125-1¾ 527 (600-1¾)			
LNAV MDA	1060-1 462 (500-1)		1060-1⅞ 462 (500-1⅞)	
CIRCLING	1160-1 554 (600-1)		1320-2 714 (800-2)	1420-2¾ 814 (900-2¾)