

WAAS Ch 45902 W10A	APP CRS 100°	Rwy Idg TDZE 600 Apt Elev 606
--	------------------------	---

RNAV (GPS) RWY 10

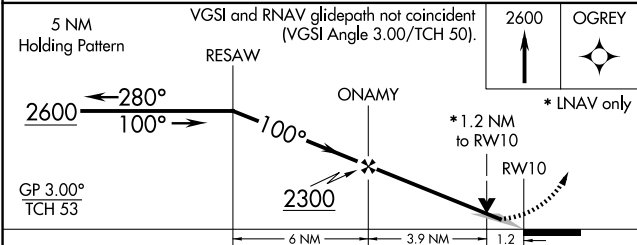
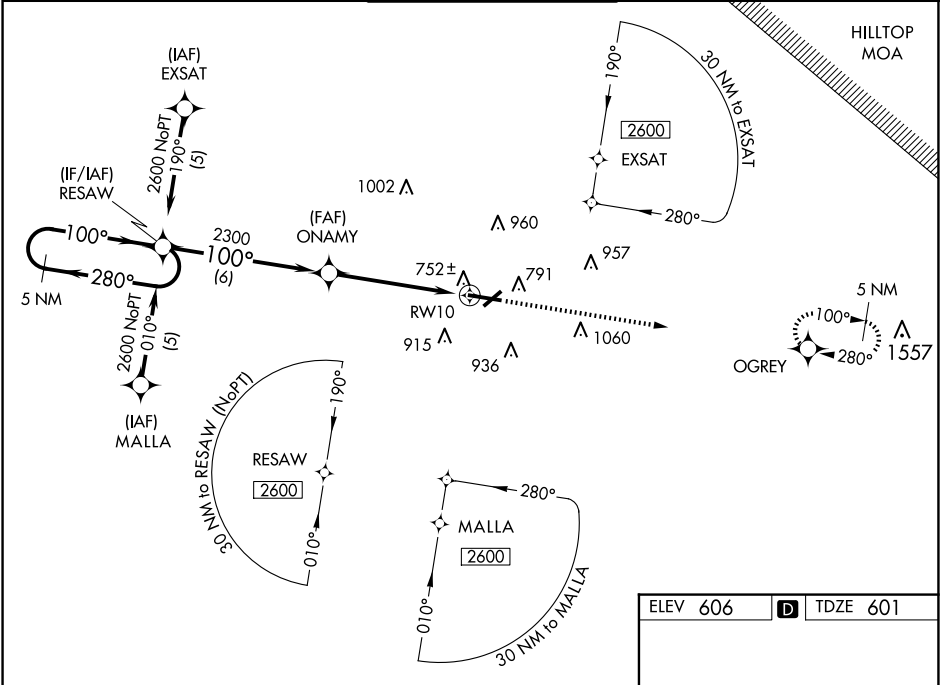
PURDUE UNIVERSITY (LAF)

When local altimeter setting not received, use Vermilion Rgnl altimeter setting and increase LPV DA to 966 feet and visibility all Cats ½ SM; increase LNAV/VNAV DA to 1172 feet; increase all MDAs 100 feet and LNAV Cats C/D visibility ¼ SM, increase Circling Cat C visibility ½ SM and Cat D visibility ¼ SM. Baro-VNAV NA when using Vermilion Rgnl altimeter setting. VDP NA when using Vermilion Rgnl altimeter setting. For uncompensated Baro-VNAV systems, LNAV/VNAV NA below -16°C (4°F) or above 47°C (116°F). For inoperative MALSR, increase LPV all Cats visibility to 1 mile. DME/DME RNP-0.3 NA. Circling Rwy 23 NA at night.

MALSR

MISSED APPROACH:
Climb to 2600 direct
OGREY and hold.

ATIS 127.75	GRISCOM APP CON* 123.85 291.675	LAFAYETTE TOWER* 119.6 (CTAF) 343.625	GND CON 121.9 343.625	UNICOM 122.95
-----------------------	---	---	---------------------------------	-------------------------



ELEV 606 TDZE 601

HIRL Rwy 10-28

REIL Rwys 5, 23 and 28

MIRL Rwy 5-23