

APP CRS
300°

Rwy Idg
TDZE
Apt Elev

5310
654
656

RNAV (GPS) RWY 31

LA CROSSE RGNL (LSE)

RNP APCH.

⚠

⚠

❄ -22°C

Circling Rwy 22 NA at night. Rwy 31 helicopter visibility reduction below 1 SM NA. When local altimeter setting not received, use Winona altimeter setting and increase all MDA 60 feet.

MISSED APPROACH: Climb to 3000 direct HISUN and on track 318° to LAKRE and hold.

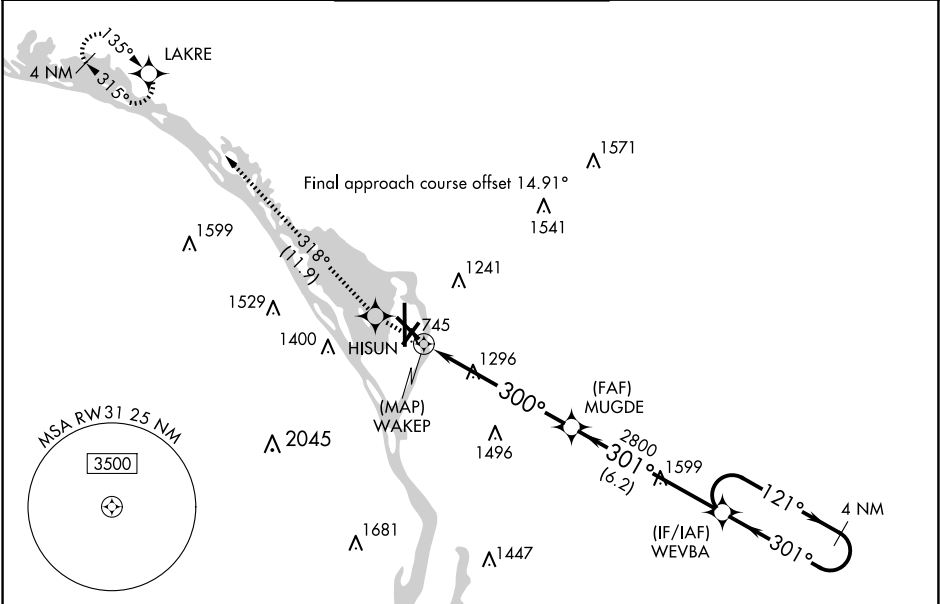
ATIS
124.95

MINNEAPOLIS CENTER
128.6 363.0

LA CROSSE TOWER ★
118.45 (CTAF) 251.075

GND CON
121.8

UNICOM
122.95



ELEV 656

D

TDZE 654

81

8742 x 150

6050 x 150

5199

712

724

36

300°

3000

HISUN

tr 318°

LAKRE

WEVBA

4 NM Holding Pattern

121°

3000

301°

300°

2800

WAKEP

MUGDE

Visual Segment - Obstacles.

0.4

6.1 NM

6.2 NM

CATEGORY	A	B	C	D
LNAV MDA	1720-1¼ 1066 (1100-1¼)	1720-1½ 1066 (1100-1½)	1720-3	1066 (1100-3)
CIRCLING	1720-1¼ 1064 (1100-1¼)	1720-1½ 1064 (1100-1½)	1760-3 1104 (1200-3)	1820-3 1164 (1200-3)

EC-3, 07 AUG 2025 to 04 SEP 2025

EC-3, 07 AUG 2025 to 04 SEP 2025