



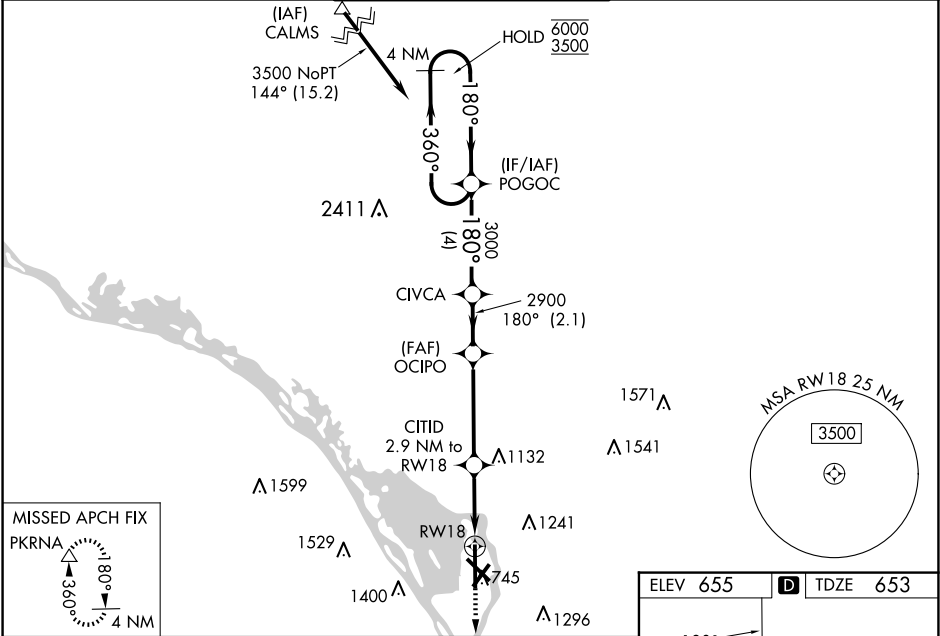


WAAS CH <b>72809</b> <b>W18A</b>	APP CRS <b>180°</b>	Rwy Idg TDZE <b>653</b> Apt Elev <b>655</b>
--	------------------------	---

RNAV (GPS) RWY 18

LA CROSSE RGNL (LSE')

RNP APCH - GPS.			MALSR		MISSED APPROACH: Climb to 3000 direct PKRNA and hold.
For uncompensated Baro-VNAV systems, LNAV/VNAV NA below -19°C or above 54°C. When local altimeter setting not received, use ONA altimeter setting and increase LPV DA to 907 feet; increase LNAV/VNAV DA to 1174 feet; increase all MDAs 60 feet and Circling visibility Cat B ¼ SM. For inop ALS, increase LNAV/VNAV all Cats visibility to 1 ½ SM, and LNAV Cats C and D to 1 ¾ SM. Baro-VNAV and VDP NA when using ONA altimeter setting.					
   -22°C					
ATIS 124.95	MINNEAPOLIS CENTER 128.6 363.0	LA CROSSE TOWER ★ 118.45 (CTAF) 251.075	GND CON 121.8	UNICOM 122.95	



4 NM Holding Pattern		POGOC	CIVCA	OCPO	CITID	RW18
6000 ← 360° 3500 → 180°		3000	2900	2900	1620	
GP 3.00° TCH 55						
		4 NM	2.1 NM	4 NM	1.6	1.3 NM
CATEGORY	A	B	C	D		
LPV DA	853-½ 200 (200-½)					
LNAV/ VNAV DA	1120-1 467 (500-1)					
LNAV MDA	1120-½	467 (500-½)	1120-1	467 (500-1)		
CIRCLING	1140-1 485 (500-1)	1460-1 805 (900-1)	1760-3 1105 (1200-3)	1820-3 1165 (1200-3)		

