

LOC I-LSE	APP CRS	Rwy Idg	8536
111.1	180°	TDZE	653
		Apt Elev	655

ILS or LOC RWY 18

LA CROSSE RGNL (LSE)

▼

▲

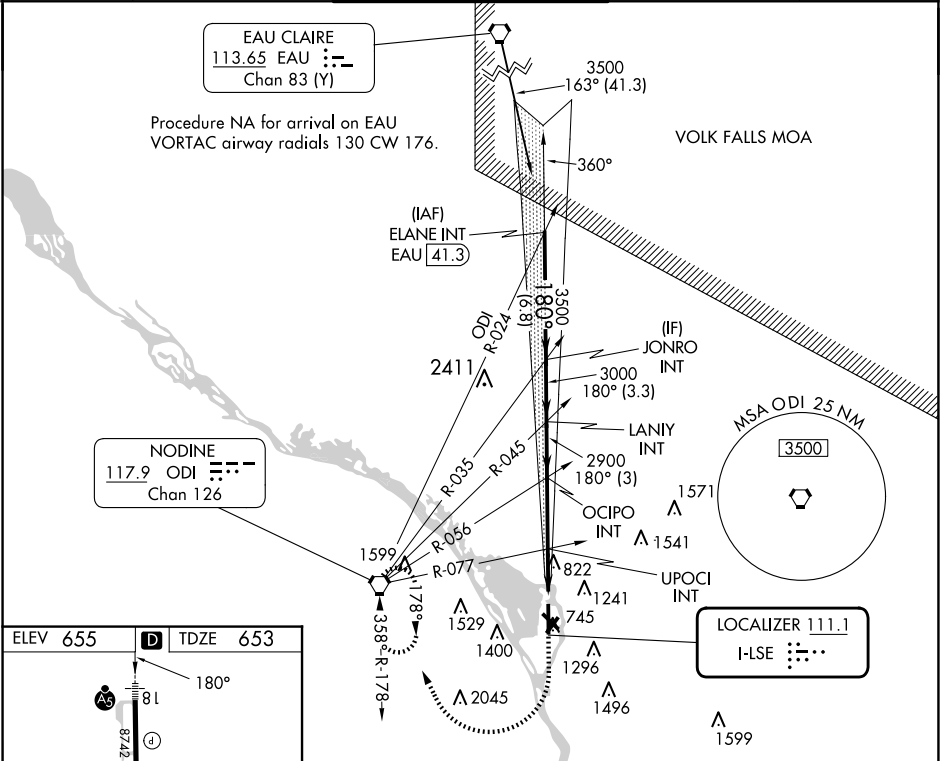
❄️ -22°C

When local altimeter setting not received, use ONA altimeter setting and increase S-ILS 18 DA to 907 and increase all MDA 60 feet and S-LOC 18 visibility Cat C/D 1/2 SM, and Circling visibility Cat B 1/2 SM. For inop ALS increase S-LOC Cats C and D visibility to 1 3/8 SM.

MALSR

MISSED APPROACH: Climb to 2400 then climbing right turn to 3400 direct ODI VORTAC and hold.

ATIS 124.95	MINNEAPOLIS CENTER 128.6 363.0	LA CROSSE TOWER ★ 118.45 (CTAF) 251.075	GND CON 121.8	UNICOM 122.95
----------------	-----------------------------------	--	------------------	------------------



ELEV 655	TDZE 653
----------	----------

81

8742 X 150

6050 X 150

5199

712

724

36

13

32

31

180°

178°

MIRL Rwy 13-31

HIRL Rws 4-22 and 18-36

REIL Rws 13, 31 and 36

FAF to MAP 6.9 NM

Knots	60	90	120	150	180
Min:Sec	6:54	4:36	3:27	2:46	2:18

	JONRO INT	LANIY INT	OCIPO INT	UPOCI INT
	3500	3000	2900	1680
	180°			
GS 3.00°				
TCH 55				
	3.3 NM	3 NM	3.8 NM	3.1 NM
CATEGORY	A	B	C	D
S-ILS 18	853-1/2 200 (200-1/2)			
S-LOC 18	1140-1/2	487 (500-1/2)	1140-1	487 (500-1)
CIRCLING	1140-1 485 (500-1)	1460-1 805 (900-1)	1760-3 1105 (1200-3)	1820-3 1165 (1200-3)