

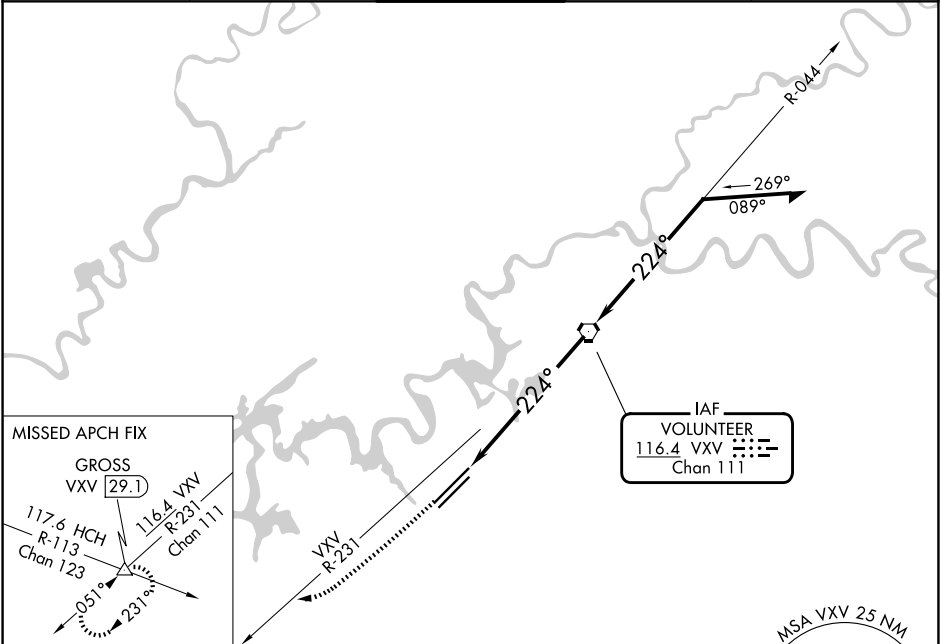
VOR/DME	VXV	Rwy Ldg	9495
116.4	APP CRS	TDZE	984
Chan 111	224°	Apt Elev	986

VOR RWY 23R
MC GHEE TYSON (TYS)

ALSIF-2

MISSED APPROACH: Climb to 3000 on VXV
VORTAC R-231 to GROSS INT/29.1 DME
and hold.

ATIS 128.35	KNOXVILLE APP CON 123.9 360.8	KNOXVILLE TOWER 121.2 257.8	GND CON 121.9 348.6	CLNC DEL 121.65
----------------	----------------------------------	--------------------------------	------------------------	--------------------



ELEV 986 **D** TDZE 984

224°

TWR

10000 x 150

0.4% DOWN

5000 x 150

0.5% UP

0.8% UP

HIRL Rwy 5L-23R and 5R-23L
REIL Rwy 5R and 23L
TDZ/CL Rwy 5R and 23R

FAF to MAP 6.6 NM

Knots	60	90	120	150	180
Min:Sec	6:36	4:24	3:18	2:38	2:12

3000

VXV R-231

GROSS

VXV VORTAC

Remain within 10 NM

044°

4000

224°

3200

3.08°

TCH 56

VXV 6.6

VXV 4.7

1.9

4.7 NM

CATEGORY	A	B	C	D
S-23R	1640/24	656 (700-½)	1640-1⅓	656 (700-1⅓)
CIRCLING	1640-1	654 (700-1)	1660-2 674 (700-2)	1900-3 914 (1000-3)

SE-1, 07 AUG 2025 to 04 SEP 2025

SE-1, 07 AUG 2025 to 04 SEP 2025