

KNOXVILLE, TENNESSEE

AL-218 (FAA)

25219

WAAS CH <b>97410</b> <b>W05B</b>	APP CRS <b>051°</b>	Rwy Ldg <b>8600</b> TDZE <b>959</b> Apt Elev <b>986</b>
--	------------------------	---

RNAV (GPS) RWY 5R  
MC GHEE TYSON (TYS)

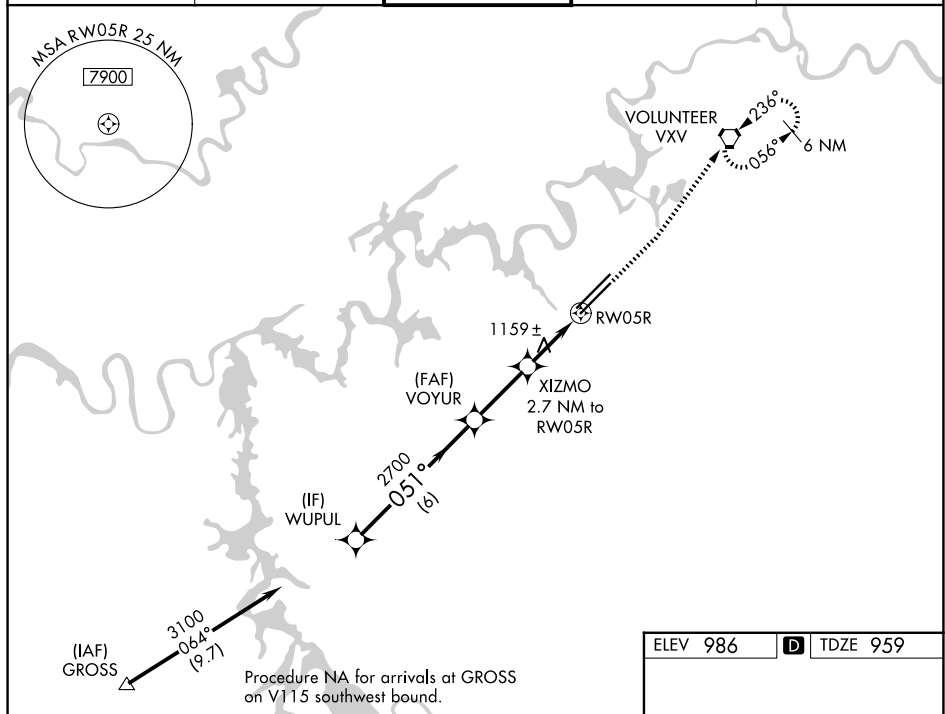
RNP APCH - GPS.



For uncompensated Baro-VNAV systems, LNAV/VNAV NA below -10°C or above 54°C.

**MISSED APPROACH:** Climb to 1500 then climb to 4000 direct VXV VORTAC and hold, continue climb-in-hold to 4000.

ATIS 128.35	KNOXVILLE APP CON 123.9 360.8	KNOXVILLE TOWER 121.2 257.8	GND CON 121.9 348.6	CLNC DEL 121.65
----------------	----------------------------------	--------------------------------	------------------------	--------------------



VGSI and RNAV glidepath not coincident (VGSI Angle 3.00/TCH 50).

WUPUL 3100 051° 2700 VOYUR XIZMO 2.7 NM to RW05R 1.4 NM to RW05R RW05R

GP 3.00° TCH 43

6 NM 2.7 NM 1.3 NM 1.4 NM

CATEGORY	A	B	C	D
LPV DA		1159- <sup>3</sup> / <sub>4</sub>	200 (200- <sup>3</sup> / <sub>4</sub> )	
LNNAV/ VNAV DA		1276-1 <sup>1</sup> / <sub>8</sub>	317 (300-1 <sup>1</sup> / <sub>8</sub> )	
LNNAV MDA	1420-1 461 (500-1)		1420-1 <sup>3</sup> / <sub>8</sub> 461 (500-1 <sup>3</sup> / <sub>8</sub> )	
CIRCLING	1500-1 514 (600-1)	1620-1 634 (700-1)	1660-2 674 (700-2)	1900-3 914 (1000-3)

KNOXVILLE, TENNESSEE  
Amdt 2B 10AUG23

35°49'N-84°00'W

MC GHEE TYSON (TYS)

## RNAV (GPS) RWY 5R

SE-1, 07 AUG 2025 to 04 SEP 2025