

WAAS

CH **48802**

**W05A**

APP CRS

**051°**

Rwy Ldg

**9508**

TDZE

**953**

Apt Elev

**986**

**RNAV (GPS) RWY 5L**

MC GHEE TYSON (T'YS)

RNP APCH - GPS.

T

A

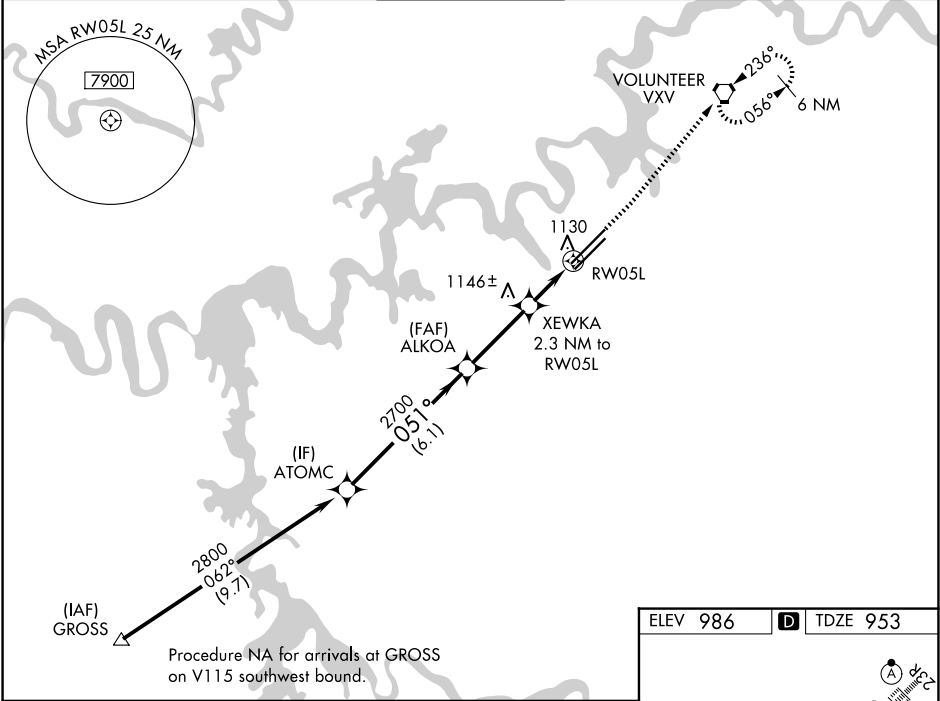
For uncompensated Baro-VNAV systems, LNAV/VNAV NA below -10°C or above 54°C.  
\* RVR 1800 authorized with use of FD or AP or HUD to DA.

MALSR

A5

MISSED APPROACH: Climb to 1500 then climb to 4000 direct VXV VORTAC and hold, continue climb-in-hold to 4000.

ATIS <b>128.35</b>	KNOXVILLE APP CON <b>123.9 360.8</b>	KNOXVILLE TOWER <b>121.2 257.8</b>	GND CON <b>121.9 348.6</b>	CLNC DEL <b>121.65</b>
-----------------------	---	---------------------------------------	-------------------------------	---------------------------



ATOMC

2800

051°

2700

1700

GP 3.00°

TCH 55

ALKOA

2700

1.2 NM to RW05L

XEWKA

2.3 NM to RW05L

RW05L

1500

4000

VXV

CATEGORY	A	B	C	D
LPV DA*	1153/24		200 (200-½)	
LNAV/VNAV DA	1291/26		338 (400-½)	
LNAV MDA	1380/24	427 (400-½)	1380/40	427 (400-¾)
CIRCLING	1500-1 514 (600-1)	1560-1 574 (600-1)	1660-2 674 (700-2)	1900-3 914 (1000-3)

HIRL Rwys 5L-23R and 5R-23L

REIL Rwys 5R and 23L

TDZ/CL Rwys 5R and 23R

ELEV 986

D

TDZE 953

TWR

051°

10000 X 1.50

8000 X 1.50

0.8% UP

0.5% UP

0.4% DOWN