

LOC I-TYS  
**110.3**

APP CRS  
**051°**

Rwy Ldg  
TDZE **953**  
Apt Elev **986**

ILS or LOC RWY 5L

MC GHEE TYSON (T'YS)

DME or RADAR required.

MALSR

MISSED APPROACH: Climb to 4100 direct VXV VORTAC and on VXV VORTAC R-053 to NEYLN/VXV 4.7 DME and hold, continue climb-in-hold to 4100.

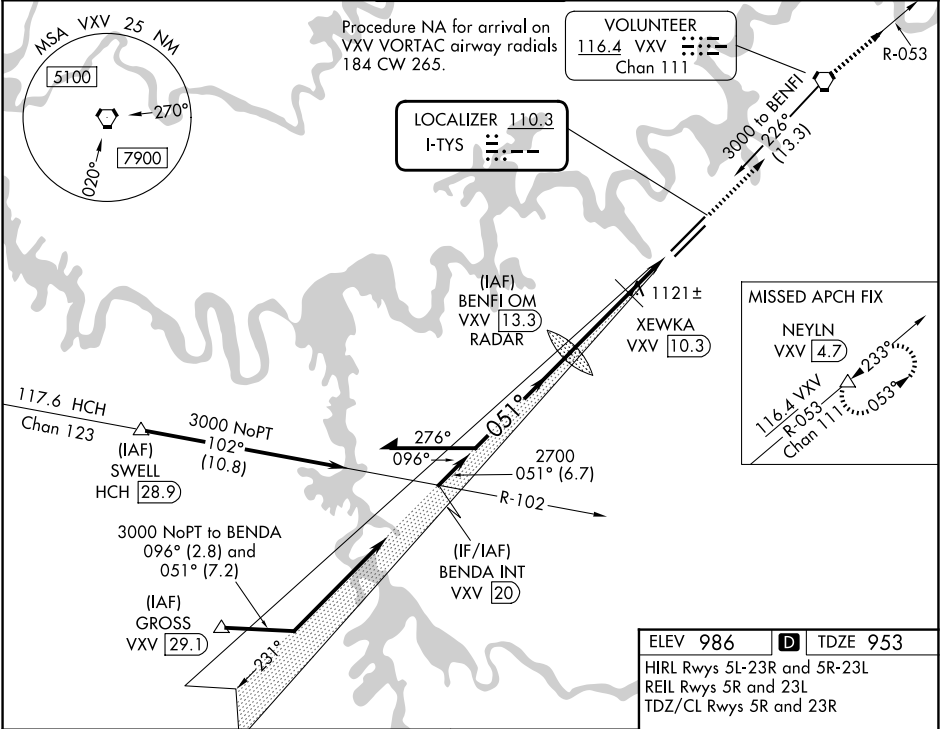
ATIS  
**128.35**

KNOXVILLE APP CON  
**123.9 360.8**

KNOXVILLE TOWER  
**121.2 257.8**

GND CON  
**121.9 348.6**

CLNC DEL  
**121.65**



Remain within 10 NM

BENFI OM VXV 13.3 RADAR

XEWKA VXV 10.3

VXV R-053

NEYLN

GS 3.00° TCH 55

3000 231° 051° 2671 2700 1700

3 NM 2.2 NM

TWR

10000 Y 150 0.8% UP 9000 L 150 0.5% UP

051°

CATEGORY	A	B	C	D
S-ILS 5L		1153-1½	200 (200-½)	
S-LOC 5L	1500-1½	547 (600-½)	1500-1⅛ 547 (600-1⅛)	
CIRCLING	1500-1 514 (600-1)	1560-1 574 (600-1)	1660-2 674 (700-2)	1900-3 914 (1000-3)

SE-1, 07 AUG 2025 to 04 SEP 2025

SE-1, 07 AUG 2025 to 04 SEP 2025