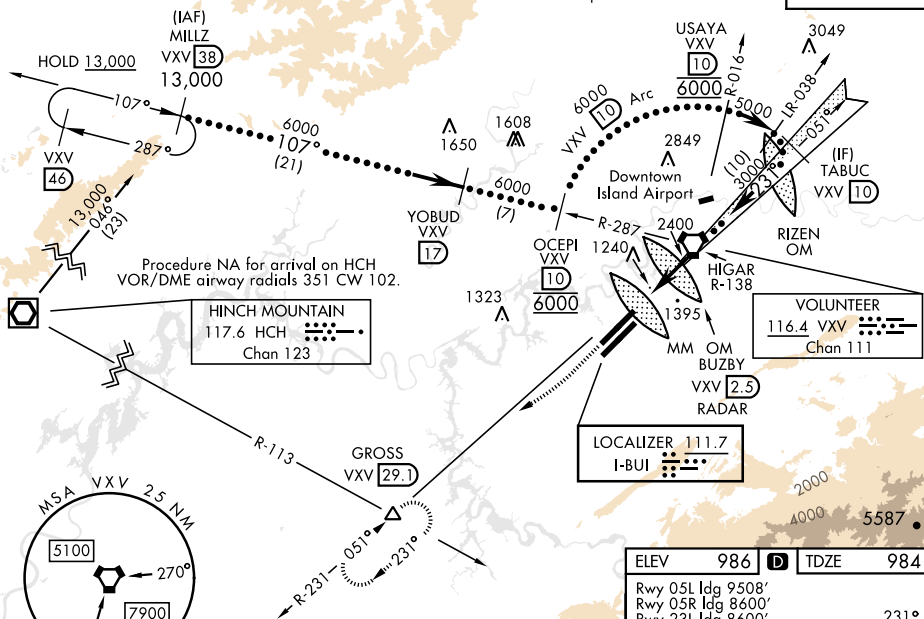


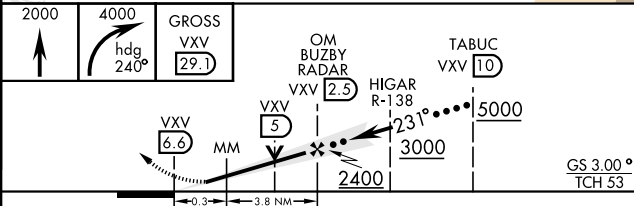
HI-ILS or LOC RWY 23R

LOC I-BUI 111.7	APCH CRS 231°	Rwy Idg 9495 TDZE 984 Arpt Elev 986	[USAF]	MC GHEE TYSON (KTYS)	
DME required			ALSf-2	MISSED APPROACH: Climb to 2000 then climbing right turn to 4000 on heading 240° and XVY VORTAC R-231 to GROSS/VXV 29.1 DME and hold.	
<div> <div>▼</div> <div> * When ALS inop, increase CAT E RVR to 40, vis to ¾ mile. ** When ALS inop, increase vis to 1½ miles. </div> </div>			<div> <div>ⓘ</div> <div> </div> </div>		
ATIS 128.35	KNOXVILLE APP CON 123.9 360.8	KNOXVILLE TOWER 121.2 257.8	GND CON 121.9 348.6	CLNC DEL 121.65	

RVR 1800 authorized with use of FD or AP or HUD to DA (NA when using altimeter setting).



EMERG SAFE ALT 100 NM 8900



CATEGORY	C	D	E
S-ILS 23R *	1184/1800	200	(200-½)
S-LOC 23R**	1560-1¼	576	(600-1¼)
CIRCLING	1660-2 674 (700-2)	1900-3	914 (1000-3)

HI-ILS or LOC RWY 23R