

KNOXVILLE, TENNESSEE

HI-ILS or LOC RWY 23L

LOC/DME I- OXH 110.75 Chan 44(Y)	APCH CRS 231°	Rwy Idg 8600 TDZE 965 Arpt Elev 986
---	-------------------------	--

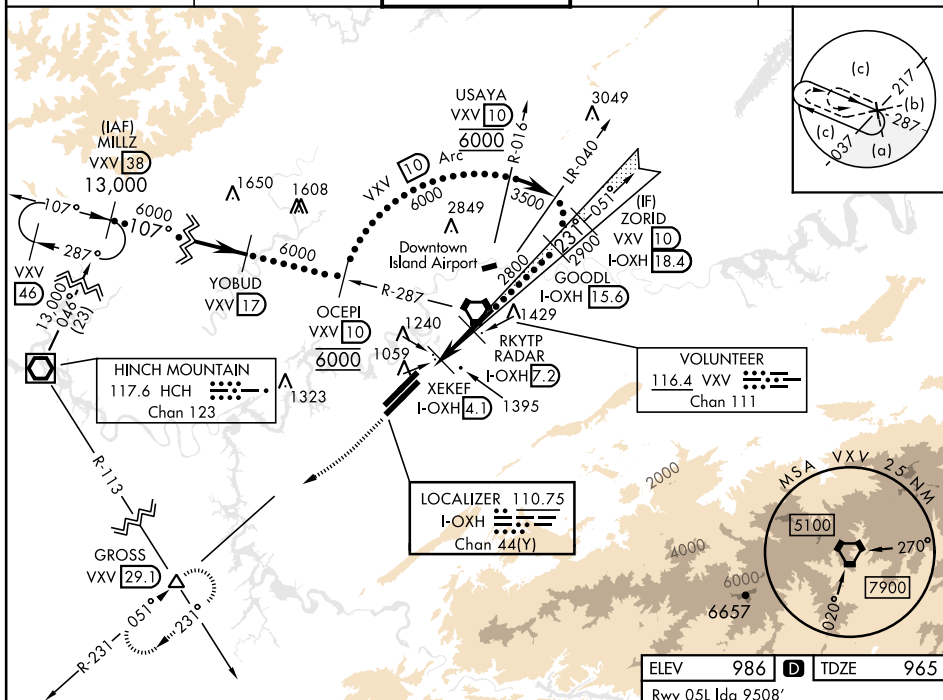
[USAF]

MC GHEE TYSON (KTYS)

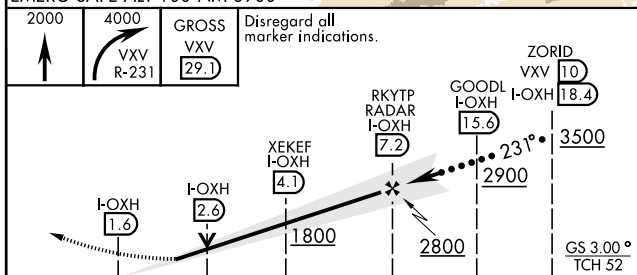
DME or RADAR required.

MISSED APPROACH: Climb to 2000, then climbing right turn to 4000 on heading 240° VXV R-231 direct GROSS Int/29.1 DME and hold.

ATIS 128.35	KNOXVILLE APP CON 123.9 360.8	KNOXVILLE TOWER 121.2 257.8	GND CON 121.9 348.6	CLNC DEL 121.65
----------------	----------------------------------	--------------------------------	------------------------	--------------------



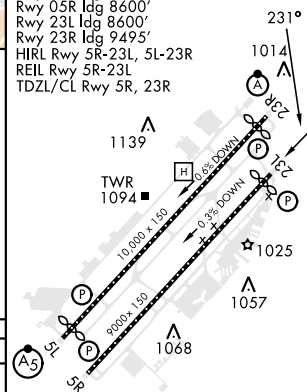
EMERG SAFE ALT 100 NM 8900



	2.5 NM	3.1 NM	
CATEGORY	C	D	E
S-ILS 23L	1165-40	200	(200-¾)
S-LOC 23L	1320-55	355	(400-1¼)
C CIRCLING	1660-2 679 (700-2)	1900-3	919 (1000-3)

ELEV	986	D	TDZE	965
Rwy 05L ldg 9508' Rwy 05R ldg 8600' Rwy 23L ldg 8600' Rwy 23R ldg 9495' HIRL Rwy 5R-23L, 5L-23R REIL Rwy 5R-23L TDZL/CL Rwy 5R, 23R				

231°
 1014



KNOXVILLE, TENNESSEE

35°49'N-84°00'W

MC GHEE TYSON (KTYS)

Orig-A 21JUL16

HI-ILS or LOC RWY 23L

SE-1, 07 AUG 2025 to 04 SEP 2025

SE-1, 07 AUG 2025 to 04 SEP 2025