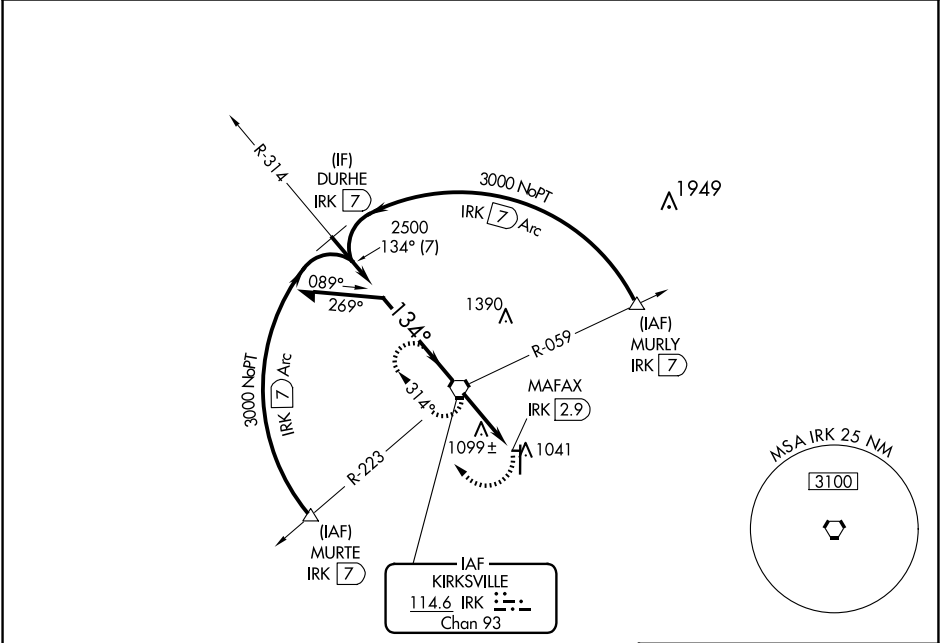


VORTAC IRK	Rwy Idg	N/A
114.6	TDZE	N/A
Chan 93	App CRS	134°
	Apt Elev	966

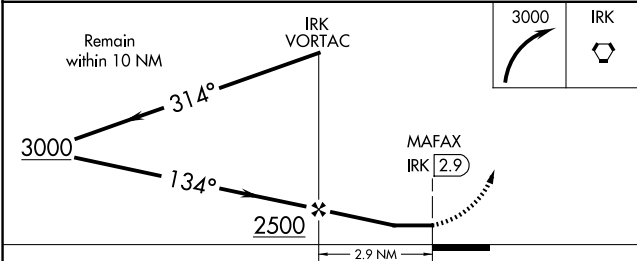
VOR-A  
KIRKSVILLE RGNL (IRK)

<div><div></div><div>Circling NA to Rws 9 and 27.</div></div>	<div>MISSED APPROACH: Climbing right turn to 3000 direct IRK VORTAC and hold, continue climb-in-hold to 3000.</div>
---	---

ASOS 121.125	KANSAS CITY CENTER 132.6 370.9	UNICOM 122.8 (CTAF) <b>0</b>
-----------------	-----------------------------------	---------------------------------



NoPT for arrivals at IRK VORTAC on airway radials 259 CW 007.



ELEV 966	<b>D</b>
134°	81
0.4% UP →	27
1370 X 100	1016
REIL Rwy 18	36
HIRL Rwy 18-36	36
FAF to MAP 2.9 NM	
Knots	60 90 120 150 180
Min:Sec	2:54 1:56 1:27 1:10 0:58