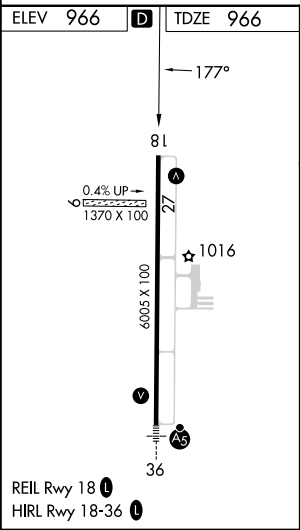
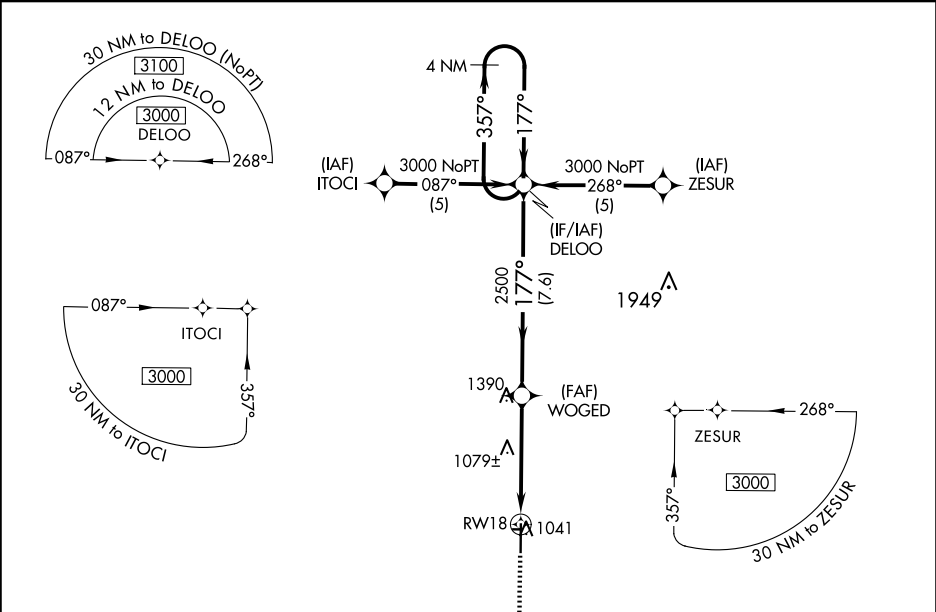


APP CRS	Rwy Idg	6005
177°	TDZE	966
	Apt Elev	966

RNAV (GPS) RWY 18
KIRKSVILLE RGNL (IRK)

RNP APCH.	MISSED APPROACH: Climb to 3000 direct HOROK and hold.
Circling NA to Rwys 9 and 27. Rwy 18 helicopter visibility reduction below ¾ SM NA.	

ASOS 121.125	KANSAS CITY CENTER 132.6 370.9	UNICOM 122.8 (CTAF) 0
-----------------	-----------------------------------	--------------------------



		<div>MISSED APCH FIX</div> <div><div>HOROK</div></div>		
<div>3000</div> <div></div>	<div>HOROK</div> <div></div>	<div>VGSI and descent angles not coincident (VGSI Angle 3.00/TCH 33).</div> <div>4 NM Holding Pattern</div>		
<div></div>				
CATEGORY	A	B	C	D
LNAV MDA	1340-1 374 (400-1)			1340-1¼ 374 (400-1¼)
CIRCLING	1400-1 434 (500-1)	1440-1 474 (500-1)	1460-1½ 494 (500-1½)	1540-2 574 (600-2)