

LOC/DME I-RK	APP CRS	Rwy Idg	6005
111.5	357°	TDZE	965
Chan 52		Apt Elev	966

ILS or LOC RWY 36  
KIRKSVILLE RGNL (IRK)

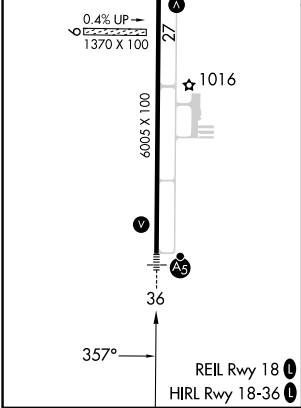
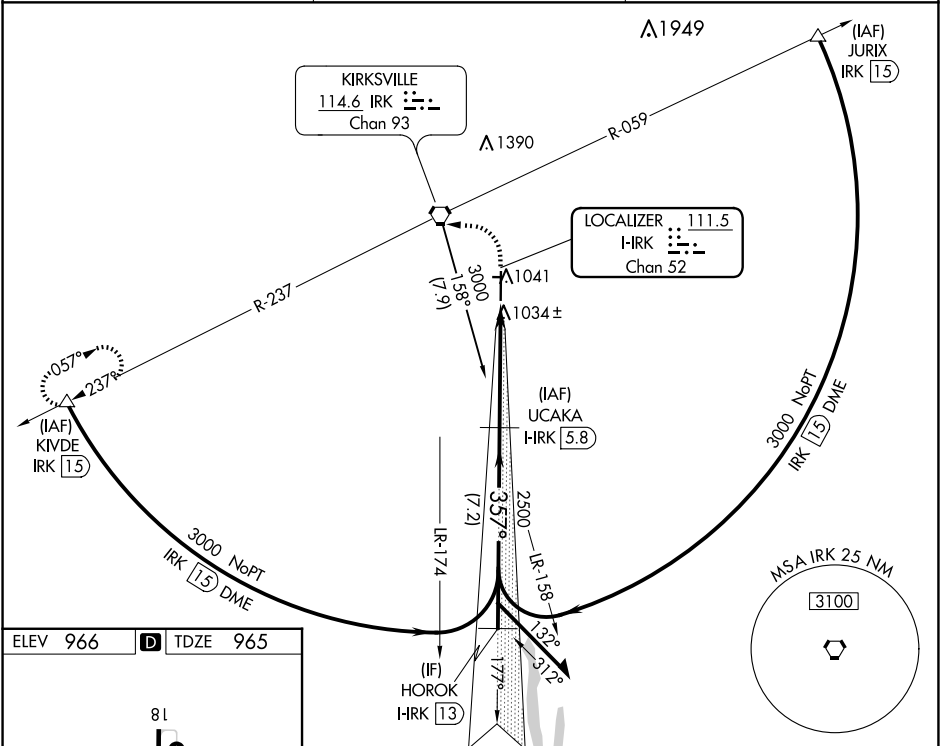
DME required.

Circling NA to Rwy 9 and 27.

MALSR

MISSED APPROACH: Climb to 1600 then climbing left turn to 3000 on heading 270° and IRK VORTAC R-237 to KIVDE/IRK 1.5 DME and hold.

ASOS 121.125	KANSAS CITY CENTER 132.6 370.9	UNICOM 122.8 (CTAF) 1
-----------------	-----------------------------------	--------------------------



UCAKA I-RK 5.8

Remain within 10 NM

3000

2500

177°

357°

GS 3.00° TCH 54

3.7 NM

0.9

1600

3000

hdg 270°

IRK R-237

KIVDE

H-IRK 2

H-IRK 1.2

CATEGORY	A	B	C	D
S-ILS 36		1165-½	200 (200-½)	
S-LOC 36		1300-½	335 (400-½)	
CIRCLING	1400-1 434 (500-1)	1440-1 474 (500-1)	1460-1½ 494 (500-1½)	1540-2 574 (600-2)

NC-3, 07 AUG 2025 to 04 SEP 2025

NC-3, 07 AUG 2025 to 04 SEP 2025