

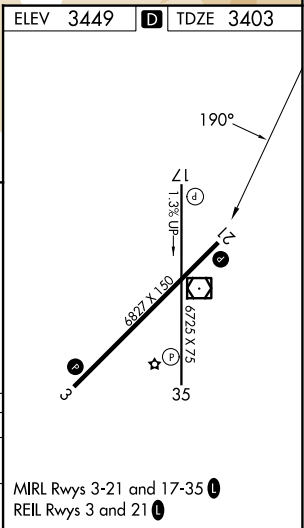
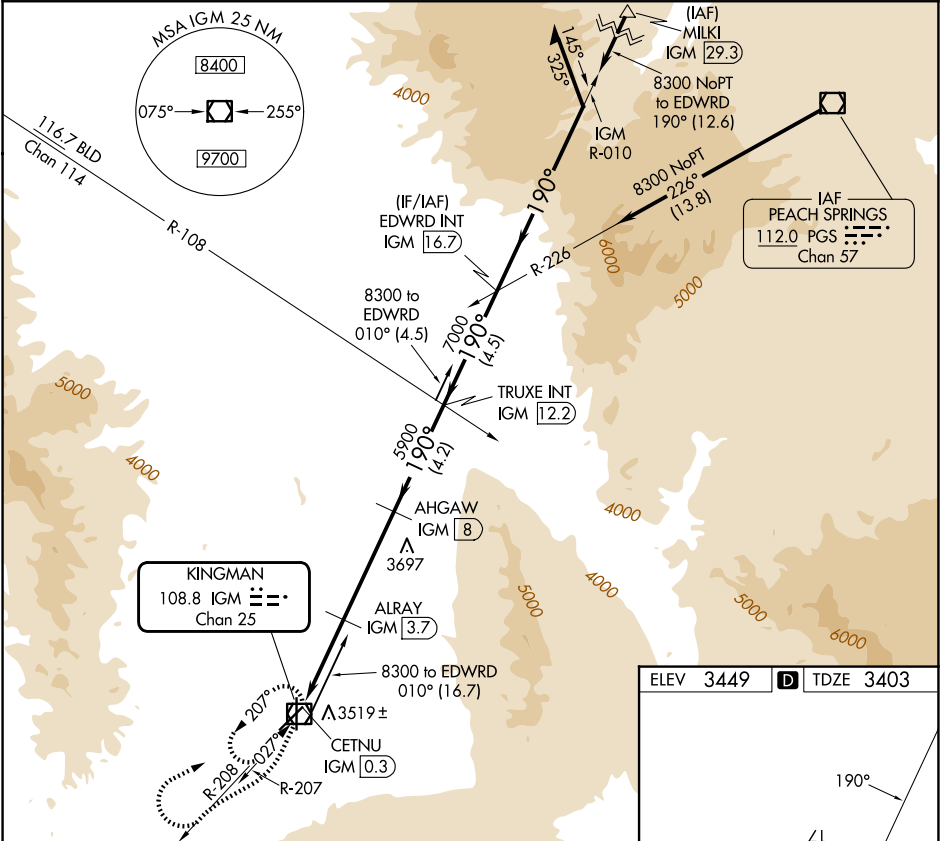
VOR/DME IGM	APP CRS	Rwy Ldg	6827
108.8	190°	TDZE	3403
Chan 25		Apt Elev	3449

VOR/DME RWY 21

KINGMAN (IGM)

<div><div><div></div><div></div></div><div>Circling Rwy 35 NA at night.</div></div>	MISSED APPROACH: Climbing right turn to 6000 via IGM VOR/DME R-208 then climbing right turn to 9000 direct IGM VOR/DME and hold.
---	--

ASOS 119.275	LOS ANGELES CENTER 124.85 319.2	UNICOM 122.8 (CTAF) 0
-----------------	------------------------------------	--------------------------



6000	9000	IGM	TRUXTON INT IGM 12.2	EDWARDS INT IGM 16.7	Remain within 10 NM
IGM R-208	IGM R-207	IGM R-208	IGM R-207	IGM R-208	IGM R-207
CETNU IGM 0.3	ALRAY IGM 3.7	ALHAWA IGM 8	ALRAY IGM 3.7	ALHAWA IGM 8	ALRAY IGM 3.7
4540	5900	7000	8300	8300	8300
3.4 NM	4.3 NM	4.2 NM	4.5 NM		
CATEGORY	A	B	C	D	
S-21	3880-1	477 (500-1)	3880-1¼	3880-1½	
CIRCLING	3980-1	4100-1	4420-3	5340-3	
	531 (600-1)	651 (700-1)	971 (1000-3)	1891 (2000-3)	

SW-4, 07 AUG 2025 to 04 SEP 2025

SW-4, 07 AUG 2025 to 04 SEP 2025