

KINGMAN, ARIZONA

AL-215 (FAA)

25219

WAAS CH 70612 W21A	APP CRS 213°	Rwy Ldg 6827 TDZE 3403 Apt Elev 3449
--	------------------------	---

RNAV (GPS) Z RWY 21
KINGMAN (IGM)

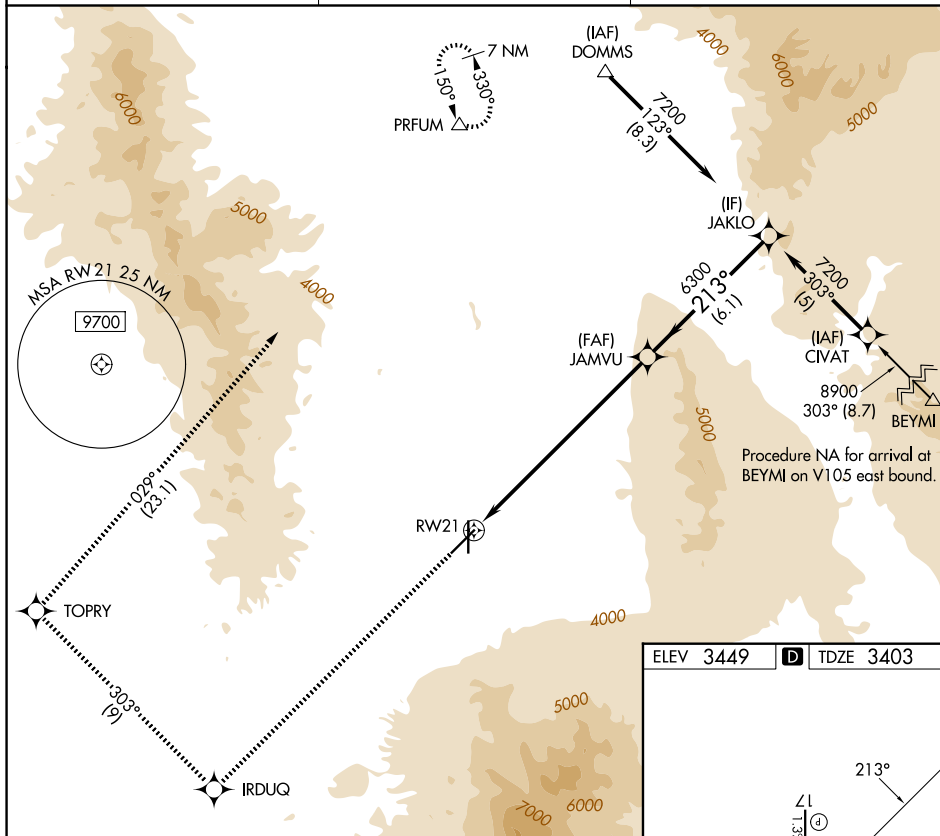
RNP APCH - GPS.

ANA

MISSED APPROACH: Climb to 9000 direct IRDUQ and on track 303° to TOPRY and on track 029° to PRFUM and hold.

ASOS
119.275

LOS ANGELES CENTER
124.85 319.2

UNICOM
122.8 (CTAF) **L**

SW-4, 07 AUG 2025 to 04 SEP 2025


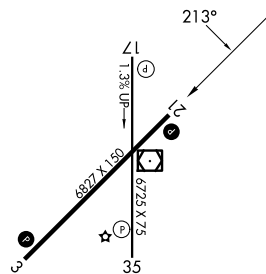
9000 ↑	IRDUQ 	tr 303°	TOPRY 	tr 029°	PRFUM △
-----------	---	------------	--	------------	------------

Diagram illustrating the proposed bridge layout and key points:

- RW21** (Riverway 21) is marked on the left.
- JAMVU** is marked in the center.
- 7200** is marked on the right.
- Distances are indicated: **8.8 NM** (Nautical Miles) from RW21 to JAMVU, and **6.1 NM** from JAMVU to 7200.
- Angles are indicated: **21°3'** (Degrees and Minutes) from the horizontal at the 7200 point, and **63°00'** from the horizontal at the JAMVU point.
- A note on the right indicates **GP 3.00°** and **TCH 45**.

CATEGORY	A	B	C	D
LPV DA	3678-1 275 (300-1)			

ELEV 3449	D	TDZE 3403
-----------	----------	-----------



REIL Rwys 3 and 21 **L**
MIRL Rwys 3-21 and 17-35 **L**

KINGMAN, ARIZONA
Orig-D 26DEC24

35°16'N-113°56'W

KINGMAN (IGM)

RNAV (GPS) Z RWY 21

SW-4, 07 AUG 2025 to 04 SEP 2025