

## KEY WEST, FLORIDA

VOR/DME or TACAN Z RWY 8

EYW VORTAC <b>113.5</b> Chan <b>82</b>	APCH CRS <b>098°</b>	Rwy Idg <b>10,001</b> TDZE <b>4</b> Arpt Elev <b>6</b>
--	-------------------------	--

[USN]

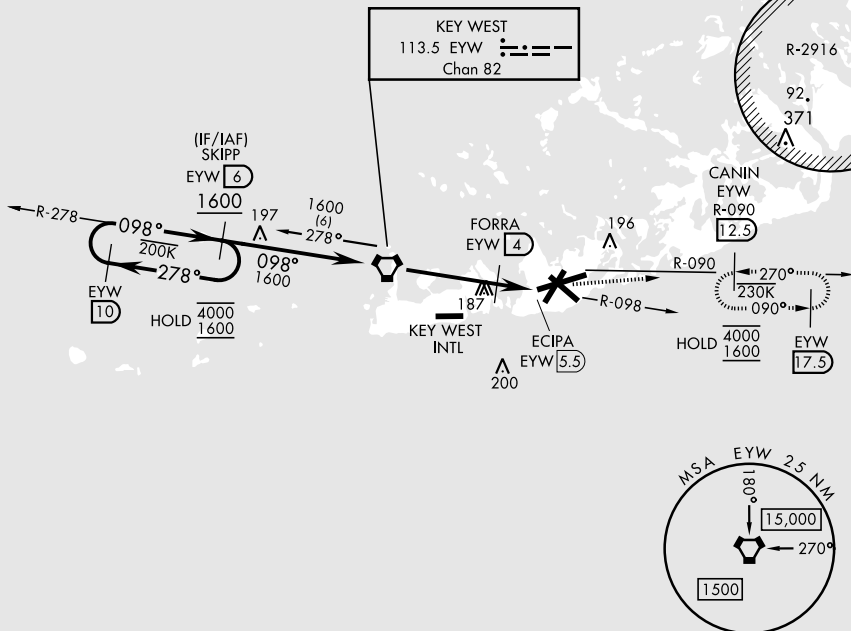
KEY WEST NAS (BOCA CHICA FLD) (KNQX)



**MISSED APPROACH:** Climbing left turn to 1600 to intercept EYW R-090 to CANIN and hold.

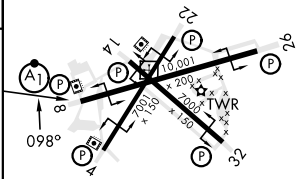
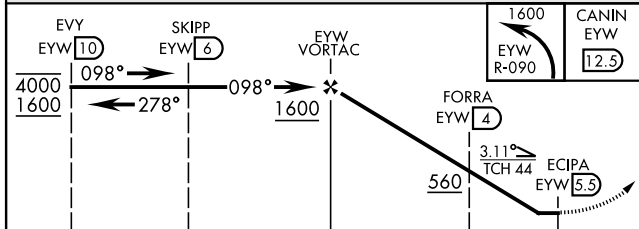
ATIS ★ 307.025	NAVY KEY WEST APP CON 124.025 313.7	NAVY KEY WEST TOWER ★ 118.575 340.25	GND CON 121.7 336.45	CLNC DEL 121.2 357.4	ASR/PAR
-------------------	--	--	-------------------------	-------------------------	---------


**CAUTION:**  
Balloon with strobe light  
on unmarked cable to  
14,000 in R-2916.



EMERG SAFE ALT 100 NM 15,000

ELEV	6		TDZE	4
------	---	--	------	---



CATEGORY	A	B	C	D
S-8	440-1 436 (500-1)	440-1 ¼ 436 (500-1 ¼)		
 CIRCLING	440-1 434 (500-1)	500-1 494 (500-1)	500-1 ½ 494 (500-1 ½)	560-2 554 (600-2)

HIRL all rwys

KEY WEST, FLORIDA

24°34'N-81°41'W

KEY WEST NAS (BOCA CHICA FLD) (KNQX)

Amdt 4 23FEB23

VOR/DME or TACAN Z RWY 8

SE-3, 07 AUG 2025 to 04 SEP 2025

SE-3, 07 AUG 2025 to 04 SEP 2025