

VOR/DME RWY 26

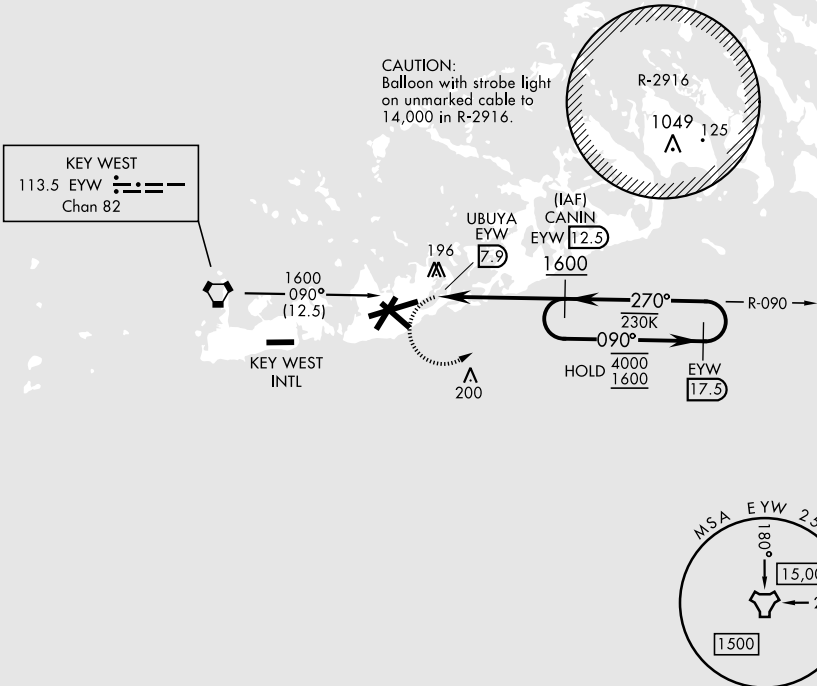
EYW VORTAC 113.5 Chan 82	APCH CRS 270°	Rwy Idg 10,001 TDZE 6 Arpt Elev 6
--------------------------------	------------------	---

[USN]

KEY WEST NAS (BOCA CHICA FLD) (KNQX)

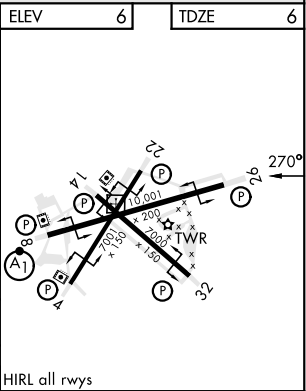
RADAR required		MISSED APPROACH: Climb to 500, then climbing left turn to 1600 to intercept EYW VORTAC R-090 to CANIN and hold.			
ATIS ★ 307.025	NAVY KEY WEST APP CON 124.025 313.7	NAVY KEY WEST TOWER ★ 118.575 340.25	GND CON 121.7 336.45	CLNC DEL 121.2 357.4	ASR/PAR

CAUTION: Final approach course crosses the extended runway centerline 5018' from threshold.



EMERG SAFE ALT 100 NM 15,000

500 1600 ↑ EYW R-090		CANIN EYW 12.5	VGSI and descent angles to coincident. (VGSI angle 3.00/TCH 43)	
UBUYA EYW 7.9		CANIN EYW 12.5	EYW 17.5	4000 1600
0.9 NM 4.6 NM		270°	090°	270°
TCH 43		2.72°	1600	4000 1600
CATEGORY	A	B	C	D
S-26	460-1 454 (500-1)	460-1 454 (500-1)	460-1 454 (500-1)	460-1 454 (500-1)
CIRCLING	460-1 454 (500-1)	500-1 494 (500-1)	500-1 494 (500-1)	560-2 554 (600-2)



VOR/DME RWY 26

SE-3, 07 AUG 2025 to 04 SEP 2025

SE-3, 07 AUG 2025 to 04 SEP 2025