

TACAN Y RWY 8

TACAN	NQX	APCH CRS	Rwy Idg
Chan	78	072°	TDZE 10,001
			Arpt Elev 4
			6

[USN]

KEY WEST NAS (BOCA CHICA FLD) (KNQX)

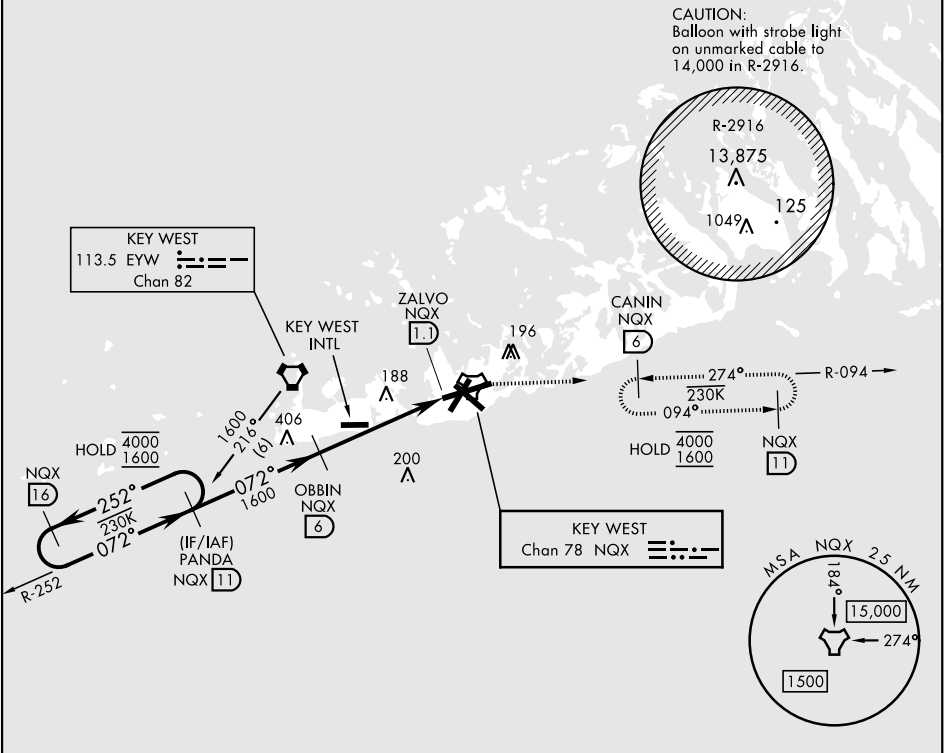
▼ * When ALS inop, increase CAT AB vis to 1 mile, CAT CD vis to 1¼ miles.



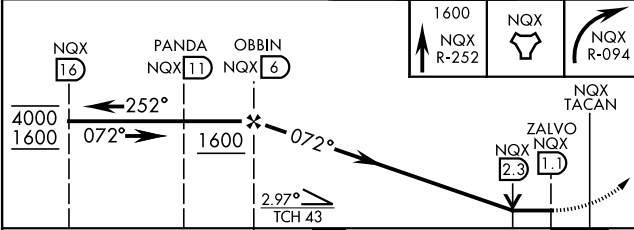
MISSED APPROACH: Climb to 1600 via R-252 to NQX TACAN then via R-094 to CANIN (NQX R-094/6 DME) and hold.

ATIS ★	NAVY KEY WEST APP CON	NAVY KEY WEST TOWER ★	GND CON	CLNC DEL	ASR/PAR
307.025	124.025 313.7	118.575 340.25	121.7 336.45	121.2 357.4	

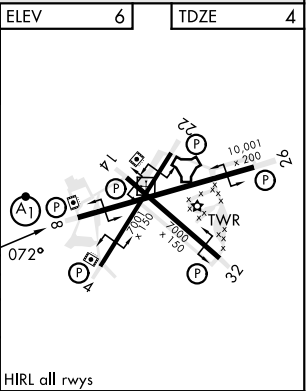
CAUTION: Short Intermediate Segment



EMERG SAFE ALT 100 NM 15,000



CATEGORY	A	B	C	D
S-8 *	440-½ 436 (500-½)	440-¾ 436 (500-¾)		
CIRCLING	440-1 434 (500-1)	500-1 494 (500-1)	500-1½ 494 (500-1½)	560-2 554 (600-2)



TACAN Y RWY 8

SE-3, 07 AUG 2025 to 04 SEP 2025

SE-3, 07 AUG 2025 to 04 SEP 2025