

## TACAN RWY 26

TACAN NQX Chan <b>78</b>	APCH CRS <b>274°</b>	Rwy Idg <b>10,001</b> TDZE <b>6</b> Arpt Elev <b>6</b>
-----------------------------	-------------------------	--

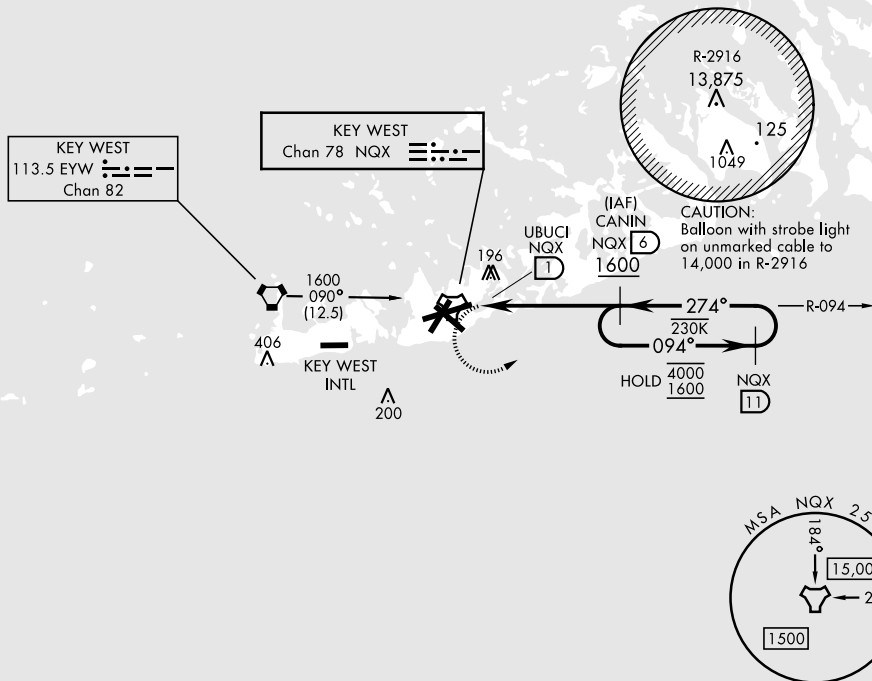
[USN]

KEY WEST NAS (BOCA CHICA FLD) (KNQX)



**MISSED APPROACH:** Climbing left turn to 1600 to intercept  
NQX R-094 to CANIN (NQX R-094/6 DME) and hold.

ATIS ★ 307.025	NAVY KEY WEST APP CON 124.025 313.7	NAVY KEY WEST TOWER ★ 118.575 340.25	GND CON 121.7 336.45	CLNC DEL 121.2 357.4	ASR/PAR
-------------------	--	--	-------------------------	-------------------------	---------



EMEG SAFE ALT 100 NM 15,000

EMEG SAFE ALT 100 NM 15,000

VGSI and descent angle not coincident. (VGSI angle 3.00/TCH 43)

CANIN NQX 6

NQX 11

NQX TACAN

UBUCHI NQX 1

NQX 1.9

274°

094°

274°

4000/1600

2.72° TCH 43

5 NM

CATEGORY	A	B	C	D
S-26	460-1	454 (500-1)	460-1 $\frac{3}{8}$	454 (500-1 $\frac{3}{8}$ )
<b>C</b> CIRCLING	460-1 454 (500-1)	500-1 494 (500-1)	500-1 $\frac{1}{2}$ 494 (500-1 $\frac{1}{2}$ )	560-2 554 (600-2)

HIRL all rwys

KEY WEST, FLORIDA

24°34'N-81°41'W

KEY WEST NAS (BOCA CHICA FLD) (KNQX)

# TACAN RWY 26

SE-3, 07 AUG 2025 to 04 SEP 2025

SE-3, 07 AUG 2025 to 04 SEP 2025