

KEY WEST, FLORIDA

RNAV (GPS) RWY 8

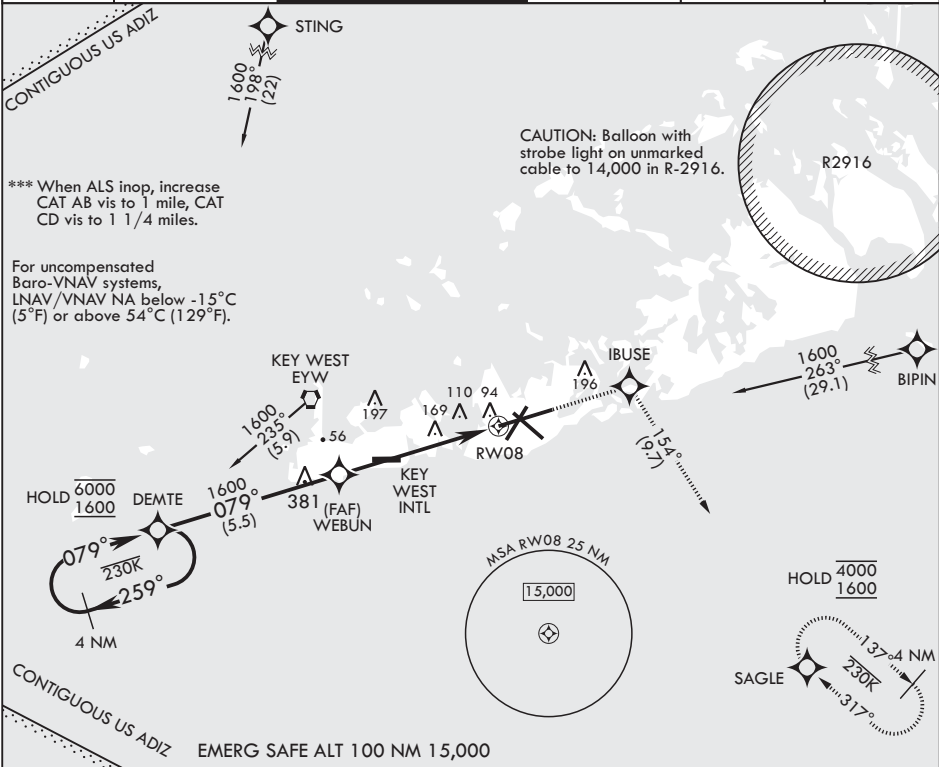
WAAS CH 65107 W08A	APCH CRS 079°	Rwy ldg TDZE Arpt Elev	10,001 4 6
--------------------------	------------------	------------------------------	------------------

- (USN)

KEY WEST NAS (BOCA CHICA FLD) (KNQX)

RNP APCH	ALSIF-1	MISSED APPROACH: (Do not exceed 230 KIAS until IBUSE) Climb to 1600 direct IBUSE, track 154° to SAGLE and hold.
*** When ALS inop, increase vis to 3/4 mile. ** When ALS inop, increase vis to 1 1/4 miles.		

ATIS★ 307.025	APP CON 124.025 313.7	NAVY KEY WEST TOWER★ 118.575 340.25	GND CON 121.7 336.45	CLNC DEL 121.2 357.4	ASR/PAR
------------------	--------------------------	--	-------------------------	-------------------------	---------



4 NM Holding Pattern	1600	IBUSE	tr 154°	ELEV 6	TDZE 4
6000 1600	DEMETE	WEBUN	1.2 NM to RW08		
GP 3.00° TCH 45	079°	079°	4.9 NM		
CATEGORY	A	B	C	D	
LPV DA*	204-1/2	200	(200-1/2)		
LNAV/VNAV DA**	427-3/4	423	(500-3/4)		
LNAV MDA***	440-1/2 436 (500-1/2)	440-3/4 436 (500-3/4)	500-1 494 (500-1 1/2)	560-2 554 (600-2)	
CIRCLING	440-1 434 (500-1)	500-1 494 (500-1)	500-1 494 (500-1 1/2)	560-2 554 (600-2)	HIRL all rwys

KEY WEST, FLORIDA

24°34'N - 81°41'W

KEY WEST NAS (BOCA CHICA FLD) (KNQX)

Amdt 3 23FEB23

RNAV (GPS) RWY 8

SE-3, 07 AUG 2025 to 04 SEP 2025

SE-3, 07 AUG 2025 to 04 SEP 2025