

KEY WEST, FLORIDA

RNAV (GPS) RWY 32

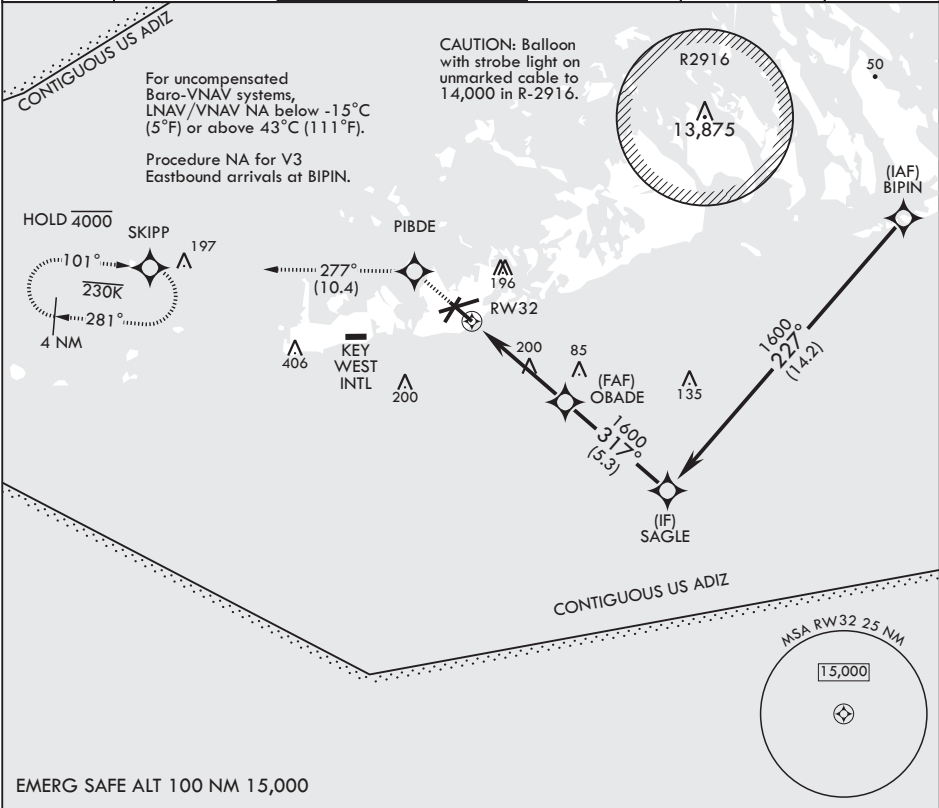
APCH CRS	Rwy Idg	7000
317°	TDZE	4
	Arpt Elev	6

- (USN)

KEY WEST NAS (BOCA CHICA FLD) (KNQX)

RNP APCH	MISSED APPROACH: (Do not exceed 230 KIAS until PIBDE.) Climb to 1600 direct PIBDE, track 277° to SKIPP and hold, continue climb-in-hold to 1600.
----------	--

ATIS ★ 307.025	APP CON 124.025 313.7	NAVY KEY WEST TOWER ★ 118.575 340.25	GND CON 121.7 336.45	CLNC DEL 121.2 357.4	ASR/PAR
-------------------	--------------------------	---	-------------------------	-------------------------	---------



1600	PIBDE	tr 277°	ELEV 6	TDZE 4
CATEGORY	A	B	C	D
LNAV/VNAV DA	254-3/4	250	(300-3/4)	
LNAV MDA	460-1	456 (500-1)	460-1 3/8	456 (500-1%)
GP 3.00° TCH 45	460-1	500-1	500-1 1/2	560-2
CIRCLING	454 (500-1)	494 (500-1)	494 (500-1 1/2)	554 (600-2)

KEY WEST, FLORIDA

24°34'N - 81°41'W

KEY WEST NAS (BOCA CHICA FLD) (KNQX)

Amdt 2 23FEB23

RNAV (GPS) RWY 32

SE-3, 07 AUG 2025 to 04 SEP 2025

SE-3, 07 AUG 2025 to 04 SEP 2025