
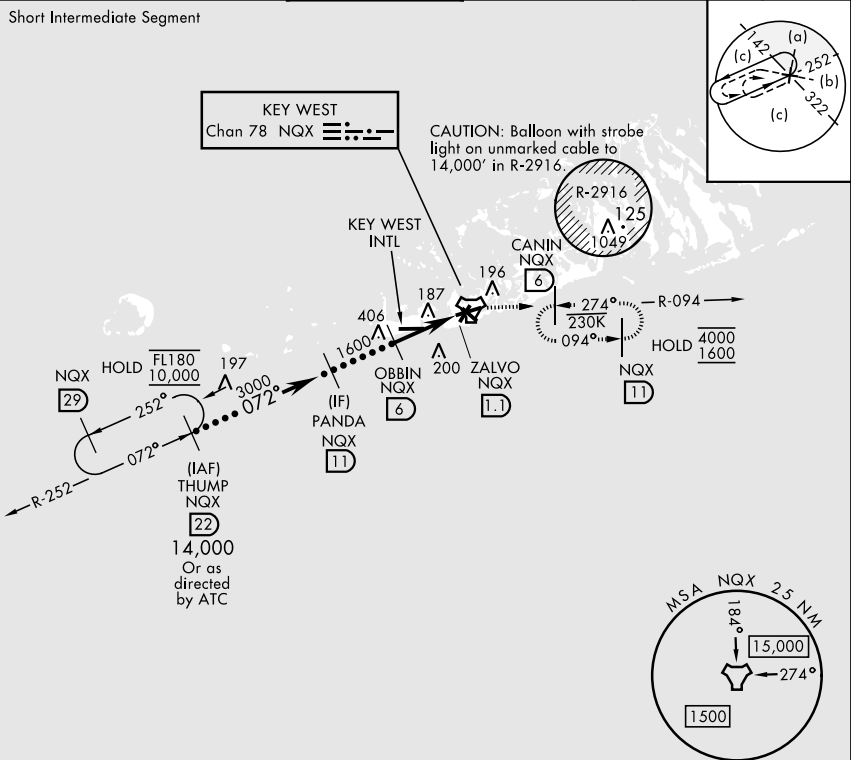


KEY WEST, FLORIDA

HI-TACAN X RWY 8

TACAN Chan <b>78</b>	APCH CRS <b>072°</b>	Rwy Idg <b>10,001</b> TDZE <b>4</b> Arpt Elev <b>6</b>	[USN]	KEY WEST NAS (BOCA CHICA FLD) (KNQX)			
RADAR required			ALSF-1	MISSED APPROACH: Climb to 1600 via R-252 to NQX TACAN then via R-094 to CANIN (NQX R-094/6 DME) and hold.			
* When ALS inop, increase vis to 1¼ miles.							
ATIS ★ <b>307.025</b>	NAVY KEY WEST APP CON <b>124.025 313.7</b>		NAVY KEY WEST TOWER ★ <b>118.575 340.25</b>		GND CON <b>121.7 336.45</b>	CLNC DEL <b>121.2 357.4</b>	ASR/PAR

CAUTION: Short Intermediate Segment



EMERG SAFE ALT 100 NM 15,000

THUMP NQX [22]	PANDA NQX [11]	OBBIN NQX [6]	1600 NQX R-252	NQX [2.3]	ZALVO NQX [1.1]	NQX TACAN	ELEV 6	TDZE 4
14,000 Or as directed by ATC	072° 3000	1600	2.97° TCH 44	4.9 NM				
CATEGORY	C	D	E					
S-8 ★	440-¾	436	(500-¾)					
CIRCLING	500-1½ 494 (500-1½)	560-2	554 (600-2)					
HIRL all rwys								

HI-TACAN X RWY 8