

WAAS CH 50112 W04A	APP CRS 037°	Rwy Idg 4270 TDZE 744 Apt Elev 757
--	------------------------	---

RNAV (GPS) RWY 4

KANSAS CITY DOWNTOWN/WHEELER FLD (MKC)

RNP APCH - GPS.

T Circling NA east of Rwy 1-19. Rwy 4 helicopter visibility reduction below RVR
A 4000 NA. For uncompensated Baro-VNAV systems, LNAV/VNAV NA below
 -19°C or above 54°C. Circling NA for Cat D to Rwy 4. Circling NA to Rwy 22.

MISSED APPROACH: Climb to 3000
direct HEBKI and on track 089° to
LYMES and hold.

ATIS 120.75	KANSAS CITY APP CON 118.4 307.35	DOWNTOWN TOWER 133.3 233.7	CLNC DEL 121.9	GND CON 121.9
----------------	-------------------------------------	-------------------------------	-------------------	------------------

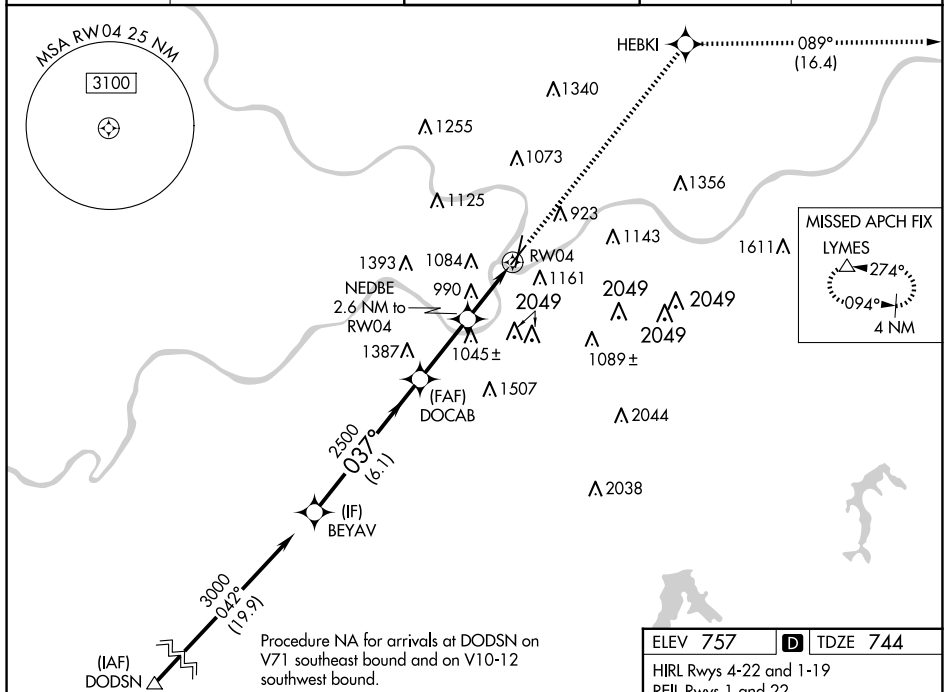


Diagram illustrating a four-segment RNAV approach. The approach starts at 3000 ft, descends to 2500 ft, and then continues to 1620 NM. The approach is for a 037° heading, with a 3.00° track angle (TCH 50). The diagram shows the BEYAV, DOCAB, and NEDBE waypoints, and the RW04 runway. The approach is divided into four segments: A (6.1 NM), B (2.8 NM), C (1.2 NM), and D (1.4 NM). The final segment (D) is a 1.4 NM segment ending at a 1540-2 1/2 ft altitude. The diagram also shows the BEYAV, DOCAB, and NEDBE waypoints, and the RW04 runway. The approach is for a 037° heading, with a 3.00° track angle (TCH 50). The diagram includes a scale bar and a legend for the symbols used.

CATEGORY	A	B	C	D
LPV DA	999/40	255 (300-¾)		NA
LNAV/VNAV DA	1411-1 7/8	667 (700-1 1/8)		NA
LNAV MDA	1240/55	496 (500-1)	1240-1 3/8 496 (500-1 3/8)	NA
CIRCLING	1380-1 623 (700-1)	1400-1 643 (700-1)	1460-2 703 (800-2)	1540-2 1/2 783 (800-2 1/2)

