

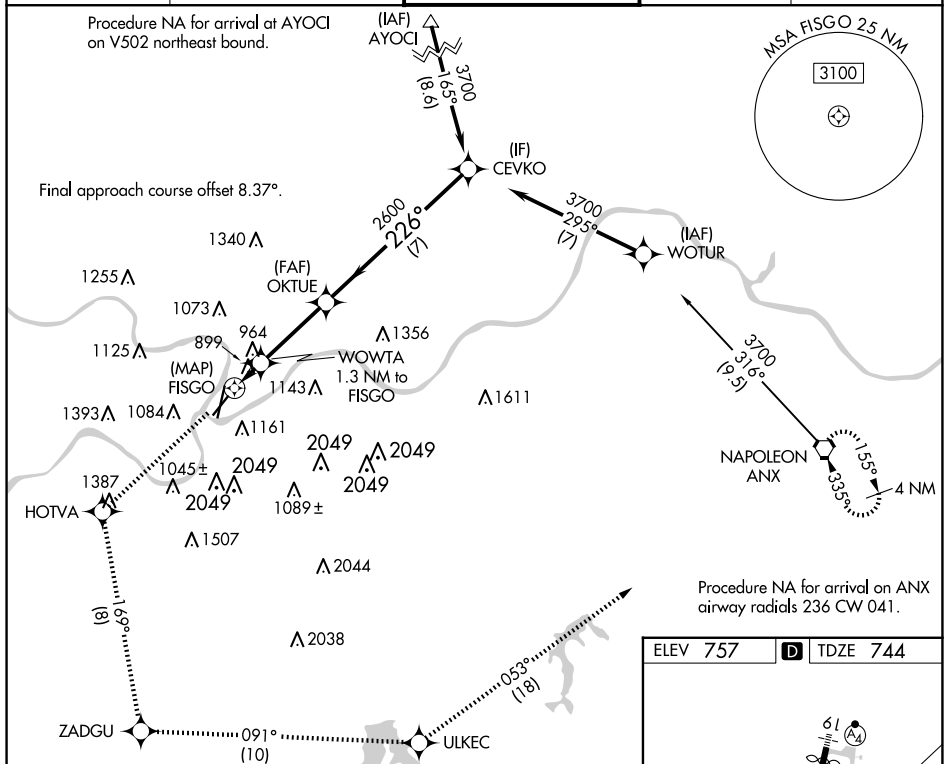
RNAV (GPS) RWY 22

KANSAS CITY DOWNTOWN/WHEELER FLD (MKC)

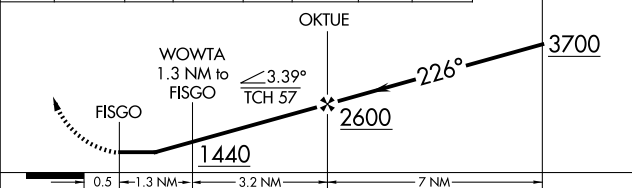
T Rwy 22 helicopter visibility reduction below 1 SM NA. Straight-in Rwy 22 at night, operational VGSI required, remain at or above VGSI glidepath until threshold.

MISSED APPROACH: Climb to 3700 direct HOTVA and on track 169° to ZADGU and on track 091° to ULKEC and on track 053° to ANX VORTAC and hold.

ATIS 120.75	KANSAS CITY APP CON 118.4 307.35	DOWNTOWN TOWER 133.3 233.7	CLNC DEL 121.9	GND CON 121.9
----------------	-------------------------------------	-------------------------------	-------------------	------------------



3700	HOTVA	tr 169°	ZADGU	tr 091°	ULKEC	tr 053°	ANX	CEVKO
------	-------	------------	-------	------------	-------	------------	-----	-------



CATEGORY	A	B	C	D
LP MDA	1160-1 416 (500-1)		1160-1 $\frac{1}{8}$ 416 (500-1 $\frac{1}{8}$)	NA
LNAV MDA	1260-1 516 (600-1)		1260-1 $\frac{3}{8}$ 516 (600-1 $\frac{3}{8}$)	NA

