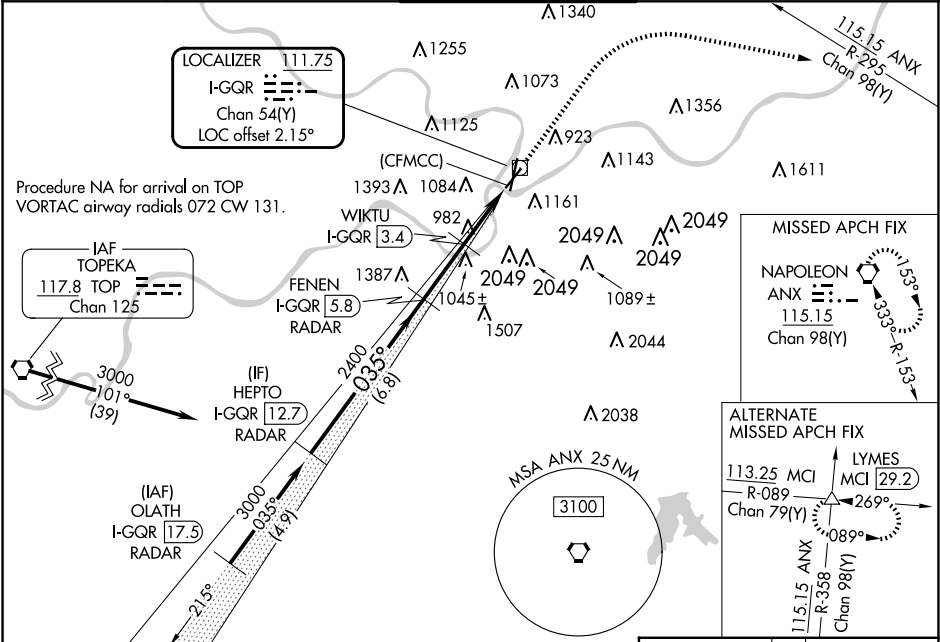


LOC/DME I-GQR <b>111.75</b> Chan <b>54</b> (Y)	APP CRS <b>035°</b>	Rwy Idg TDZE <b>744</b> Apt Elev <b>757</b>
--	------------------------	---

ILS or LOC RWY 4  
KANSAS CITY DOWNTOWN/WHEELER FLD (MKC)

DME or RADAR required for procedure entry. DME or RADAR required for LOC only.		MISSED APPROACH: Climb to 3100 then right turn heading 100° and on ANX VORTAC R-295 to ANX VORTAC and hold.		
⚠ Cirdling NA east of Rwy 1-19. Autopilot coupled approach NA below 1013. ⚠ Cirdling NA to Rwy 22. Cirdling NA for Cat D to Rwy 4. Rwy 4 helicopter visibility reduction below RVR 4000 NA.	ATIS <b>120.75</b>	KANSAS CITY APP CON <b>118.4 307.35</b>	DOWNTOWN TOWER <b>133.3 233.7</b>	CLNC DEL <b>121.9</b>
				GND CON <b>121.9</b>



HEPTO I-GQR 12.7 RADAR		3100		ANX	
3000		hdg 100°		ANX R-295	
GS 3.00° TCH 52		FENEN I-GQR 5.8 RADAR		WIKTU I-GQR 3.4	
035°		2400		I-GQR 2.2	
6.8 NM		2.4 NM		(CFMCC) I-GQR 0.8	
1.2 NM		1.4 NM			
CATEGORY	A	B	C	D	
S-ILS 4	1001/40 257 (300-¾)			NA	
S-LOC 4	1560/55 816 (900-1)	1560-1¼ 816 (900-1¼)	1560-2½ 816 (900-2½)	NA	
CIRCLING	1560-1 803 (900-1)	1560-1¼ 803 (900-1¼)	1560-2½ 803 (900-2½)		
WIKTU FIX MINIMUMS					
S-LOC 4	1240/55 496 (500-1)	1240-1⅜ 496 (500-1⅜)	NA		
CIRCLING	1380-1 623 (700-1)	1400-1 643 (700-1)	1460-2 703 (800-2)	1540-2½ 783 (800-2½)	

