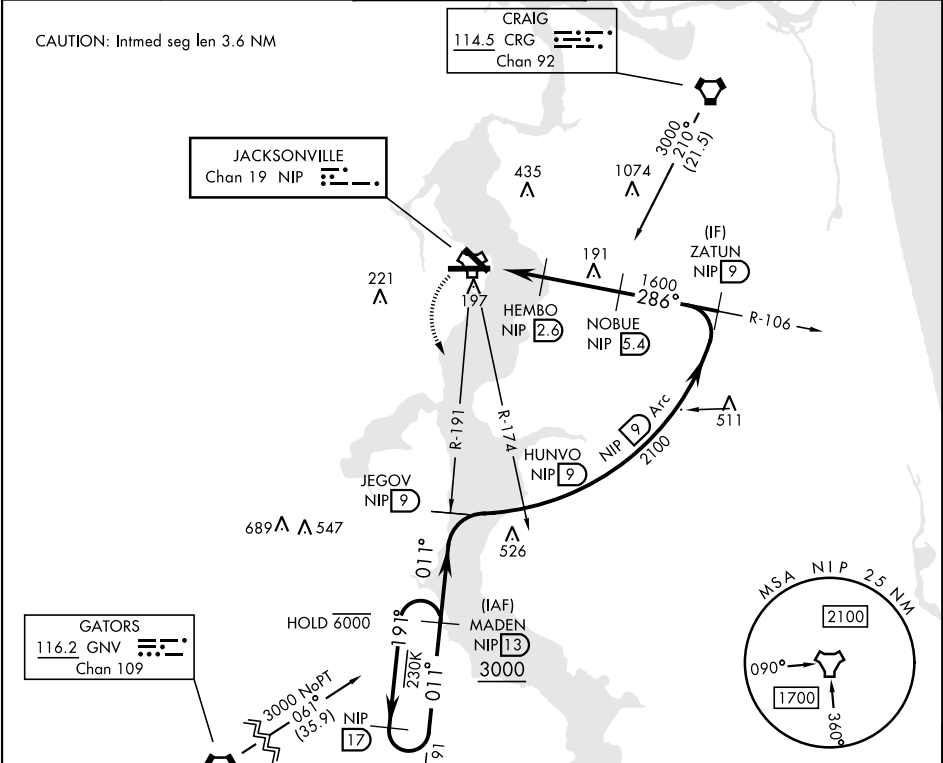
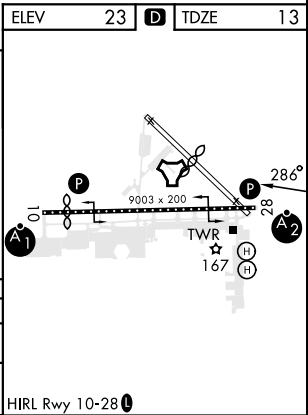


TACAN Y RWY 28

TACAN Chan 19	NIP 286°	APCH CRS 286°	Rwy Idg TDZE Arpt Elev	9003 13 23	[USN]	JACKSONVILLE NAS (TOWERS FLD)	(KNIP)
* When ALS inop, increase CAT AB vis to 1 mile, CAT CD vis to 1½ miles.					SALSF A2	MISSED APPROACH: Climb to 2000 direct NIP TACAN and turn left outbound R-191 to MADEN and hold.	
ATIS 124.35 290.425	APP CON 127.775 377.075	NAVY JACKSONVILLE TOWER 125.15 (CTAF) 340.2		GND CON 128.6 336.4	CLNC DEL 134.775 353.675	ASR/ PAR	



EMERG SAFE ALT 100 NM 2800	2000 NIP	NIP R-191	MADEN NIP 13	NOBUE NIP 5.4	ZATUN NIP 9
GRUEN NIP 1.1	NIP 1.6	HEMBO NIP 2.6	2.99° TCH 60	2100	1600
0.5	1.5 NM	2.8 NM			
CATEGORY	A	B	C	D	
S-28*	400-¾	387 (400-¾)	400-7/8	387 (400-7/8)	
CIRCLING	500-1	477 (500-1)	560-1½ 537 (600-1½)	780-2½ 757 (800-2½)	



TACAN Y RWY 28

SE-3, 07 AUG 2025 to 04 SEP 2025

SE-3, 07 AUG 2025 to 04 SEP 2025