

TACAN Y RWY 10

TACAN NIP Chan <b>19</b>	APCH CRS <b>087°</b>	Rwy Idg <b>8006</b> TDZE <b>21</b> Arpt Elev <b>23</b>
-----------------------------	-------------------------	--

[USN]

JACKSONVILLE NAS (TOWERS FLD) (KNIP)



\* When ALS inop, increase CAT AB vis to 1 mile, CAT CD vis to 1 1/8 miles.

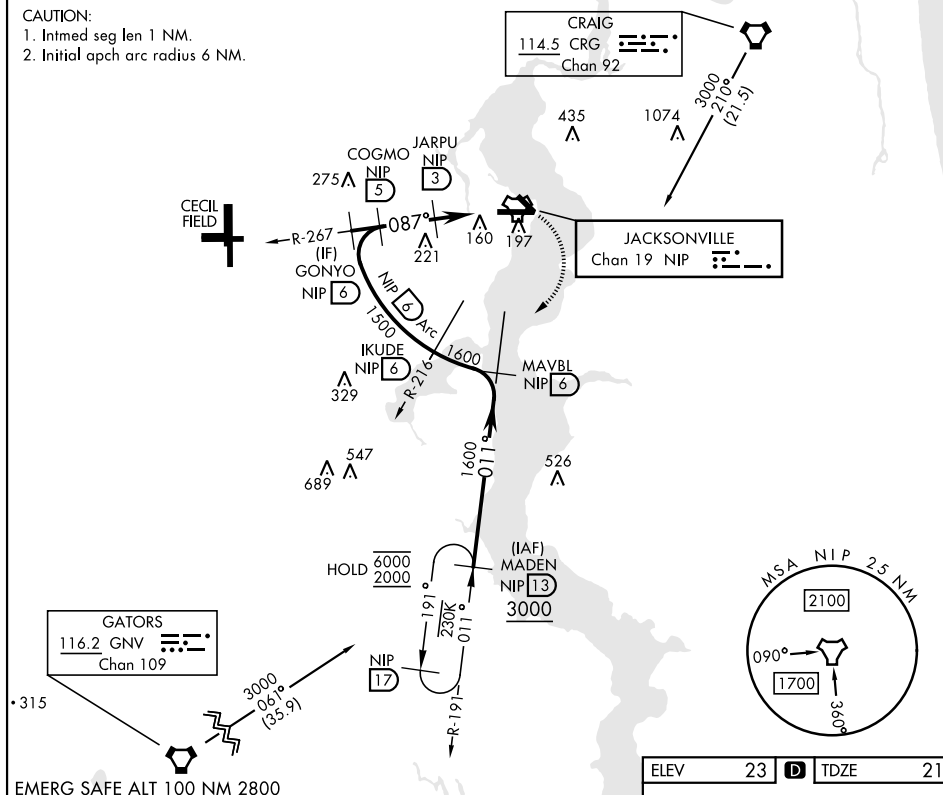


**MISSED APPROACH:** Climb to 2000 direct NIP TACAN and turn right outbound R-191 to MADEN and hold.

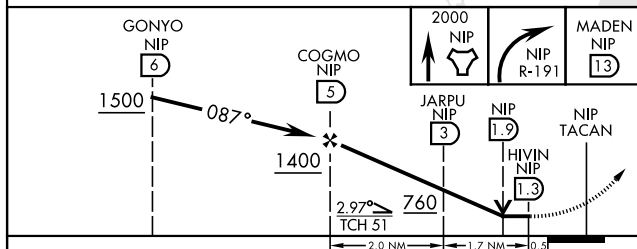
ATIS	APP CON	NAVY JACKSONVILLE TOWER	GND CON	CLNC DEL	ASR/ PAR
124.35 290.425	127.775 377.075	125.15 (CTAF) 340.2	128.6 336.4	134.775 353.675	

**CAUTION:**

1. Intmed seg len 1 NM.
2. Initial apch arc radius 6 NM.

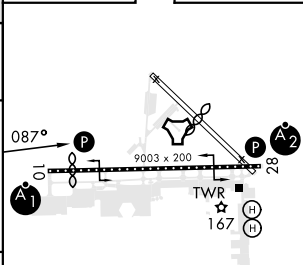


EMERG SAFE ALT 100 NM 2800



CATEGORY	A	B	C	D
S-10 *	420-½ 399 (400-½)		420-¾ 399 (400-¾)	
CIRCLING	500-1 477 (500-1)		560-1½ 537 (600-1½)	780-2½ 757 (800-2½)

ELEV	23	<b>D</b>	TDZE	21
------	----	----------	------	----

HIRL Rwy 10-28 **L**