

RNAV (GPS) Z RWY 10

WAAS CH 42020 W10A	APCH CRS 096°	Rwy Idg 8006 TDZE 21 Arpt Elev 23
--------------------------	------------------	---

(USN)

JACKSONVILLE NAS (TOWERS FLD) (KNIP)

RNP APCH

ALSF-1

MISSED APPROACH: Climb to 600 then climbing right turn to 2000 direct MADEN and hold.

T * When ALS inop increase CAT ABCD vis to 3/4 mile.



2000 direct MADEN and hold.

A1

1

--	--

ATIS 124.35 290.425	APP CON/DEP CON 127.775 377.075	TOWER 125.15 (CTAF) 340.2	GND CON 128.6 336.4	CLNC DEL 134.775 0 353.675	ASR/PAR
------------------------	------------------------------------	------------------------------	------------------------	-------------------------------	---------

For uncompensated
BARO-VNAV systems,
LNAV/VNAV NA below
-15°C (5°F) and above
54°C (130°F).

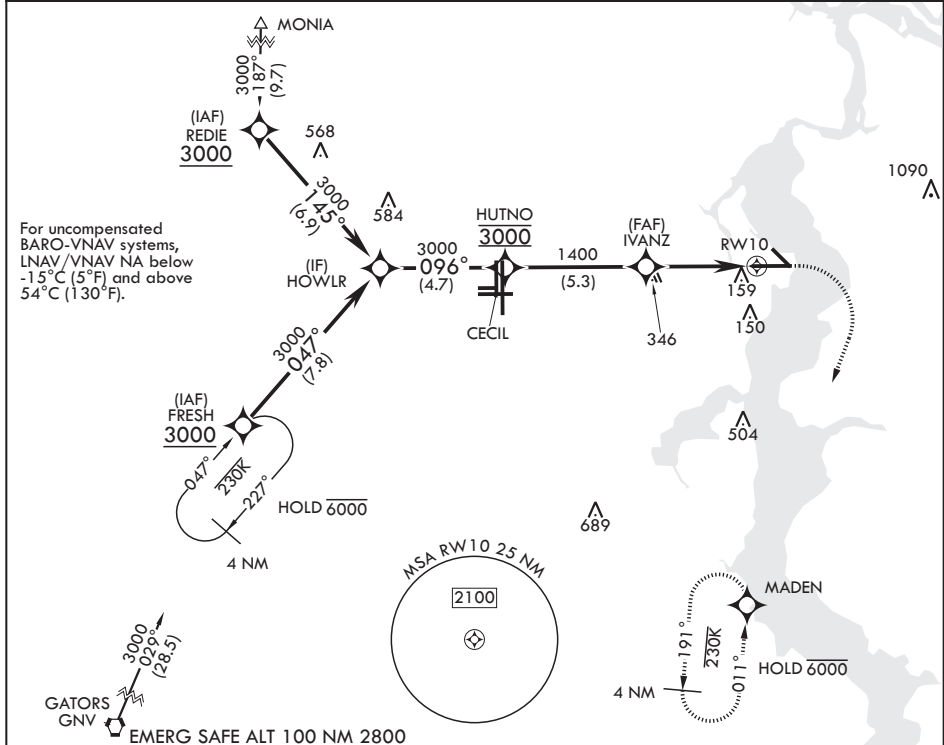


Figure 1 is an example of a 4th Class Instrument Approach Chart. It shows a procedure for RWY 10. The chart includes a table of approach minima and a diagram of the runway layout.

CATEGORY	A	B	C	D
LPV DA*	221-½	200	(200-½)	
RNAV/VNAV DA**	387-⅝	366	(400-⅝)	
RNAV MDA***	440-½	419 (500-½)	440-¾ 419 (500-¾)	
CIRCLING	500-1	477 (500-1)	560-1½ 537 (600-1½)	780-2½ 757 (800-2½)

Diagram details: The diagram shows a runway layout with a 1400' obstacle (IVANZ) and a 1.2 NM distance to RWY 10. The approach is a 096° heading from a 3000' altitude. The chart includes a table of approach minima and a diagram of the runway layout.

JACKSONVILLE, FLORIDA

30°14'N - 81°41'W

JACKSONVILLE NAS (TOWERS FLD) (KNIP)

RNAV (GPS) Z RWY 10

Amdt 1 03NOV22

SE-3, 07 AUG 2025 to 04 SEP 2025