

JACKSONVILLE, FLORIDA

RNAV (RNP) Y RWY 28

APCH CRS	Rwy Idg	9003
276°	TDZE	13
	Arpt Elev	23

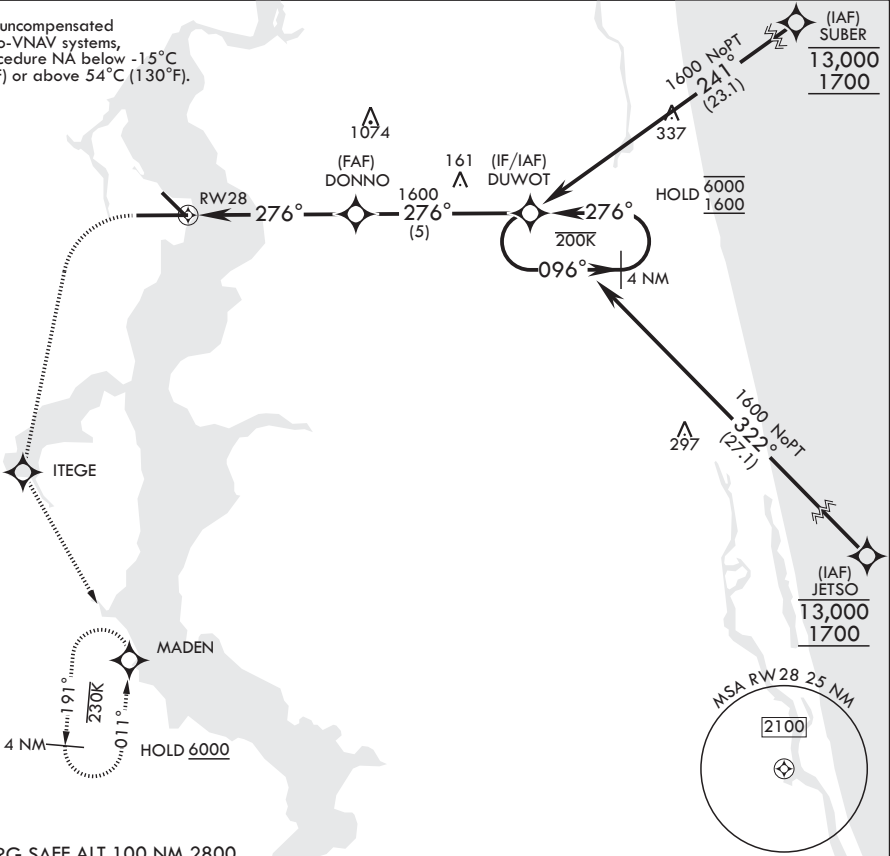
(USN)

JACKSONVILLE NAS (TOWERS FLD) (KNIP)

RNP AR APCH	SALSF	MISSED APPROACH: Climb to 600 then climbing left turn to 2000 direct ITEGE, track 156° to MADEN and hold.
▼ * When ALS inop increase CAT ABCD vis to 7/8 mile.		

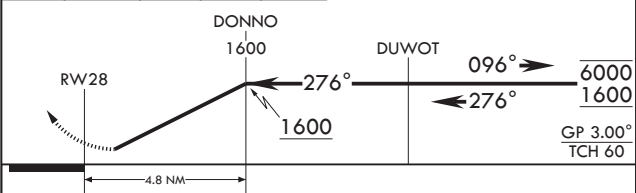
ATIS	APP CON/DEP CON	TOWER	GND CON	CLNC DEL	ASR/PAR
124.35 290.425	127.775 377.075	125.15 (CTAF) 340.2	128.6 336.4	134.775 353.675	

For uncompensated Baro-VNAV systems, procedure NA below -15°C (5°F) or above 54°C (130°F).



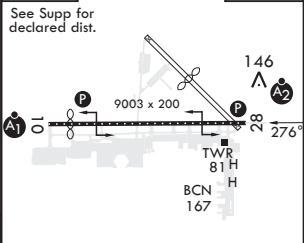
EMERG SAFE ALT 100 NM 2800

600	2000	ITEGE	tr 156°	MADEN
crs 276°				



CATEGORY	A	B	C	D
RNP 0.30 DA*	310-3/4	297	(300-3/4)	

ELEV 23	TDZE 13
---------	---------



HIRL Rwy 10-28

JACKSONVILLE, FLORIDA

30°14'N - 81°41'W

JACKSONVILLE NAS (TOWERS FLD) (KNIP)

Amdt 1 03NOV22

RNAV (RNP) Y RWY 28

SE-3, 07 AUG 2025 to 04 SEP 2025

SE-3, 07 AUG 2025 to 04 SEP 2025