

RNAV (RNP) Y RWY 10

| | | |
|----------|-----------|------|
| APCH CRS | Rwy Idg | 8006 |
| 096° | TDZE | 21 |
| | Arpt Elev | 23 |

(USN)

JACKSONVILLE NAS (TOWERS FLD) (KNIP)

RNP AR APCH - RF required.

▼ * When ALS inop increase vis to 1 mile.



MISSED APPROACH: Climb to 600 then climbing right turn to 2000 direct MADEN and hold.

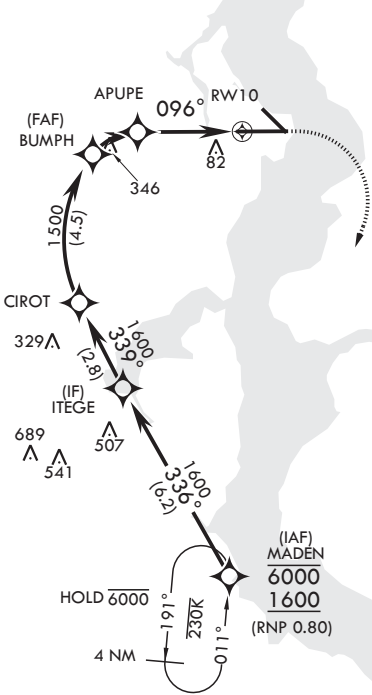
| | | | | | |
|----------------|-----------------|---------------------|-------------|-----------------|---------|
| ATIS | APP CON/DEP CON | TOWER | GND CON | CLNC DEL | ASR/PAR |
| 124.35 290.425 | 127.775 377.075 | 125.15 (CTAF) 340.2 | 128.6 336.4 | 134.775 353.675 | |

For uncompensated Baro-VNAV systems, procedure NA below -15°C (5°F) or above 54°C (130°F).

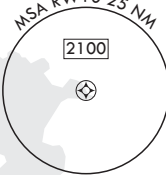


CECIL

AUTHORIZATION REQUIRED



1074
A



EMERG SAFE ALT 100 NM 2800

