

VORTAC CRG

114.5

Chan 92

APP CRS

132°

Rwy Ldg TDZE

41

Apt Elev

41

4008

VOR RWY 14

JACKSONVILLE EXEC AT CRAIG (CRG)

Procedure NA at night.
DME or Radar required.
Helicopter visibility reduction below 1 SM NA.

MISSED APPROACH: Climb to 2100 via CRG VORTAC R-129 then right turn direct CRG VORTAC and hold.

ATIS

125.4

JACKSONVILLE APP CON

124.9 308.4

CRAIG TOWER ★

132.1 (CTAF) 269.525

GND CON

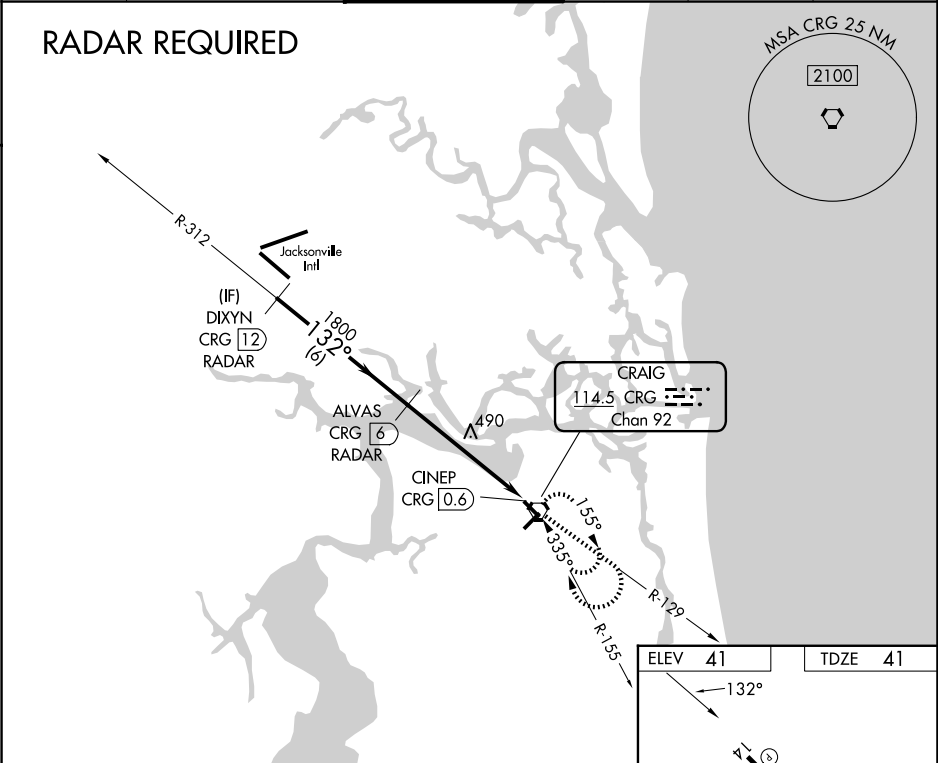
121.8

CLNC DEL

118.35

UNICOM

122.95



DIXYN CRG 12 RADAR

3000

132°

1800

2.98°

TCH 44

6 NM

5.5 NM

2100

CRG R-129

CRG

CINEP CRG 0.6

ELEV 41

TDZE 41

132°

4008 X 100

TWR

4004 X 100

MIRL Rwy 5-23

HIRL Rwy 14-32

REIL Rws 14 and 23

FAF to MAP 5.5 NM

Knots	60	90	120	150	180
Min:Sec	5:30	3:40	2:45	2:12	1:50

CATEGORY	A	B	C	D
S-14	800-1 759 (800-1)	800-1¼ 759 (800-1¼)	800-2½	759 (800-2½)
CIRCLING	800-1 759 (800-1)	800-1¼ 759 (800-1¼)	800-2½	759 (800-2½)