

WAAS CH 63026 W25A	APP CRS 251°	Rwy Idg 4001 TDZE 86 Apt Elev 86
--	------------------------	---

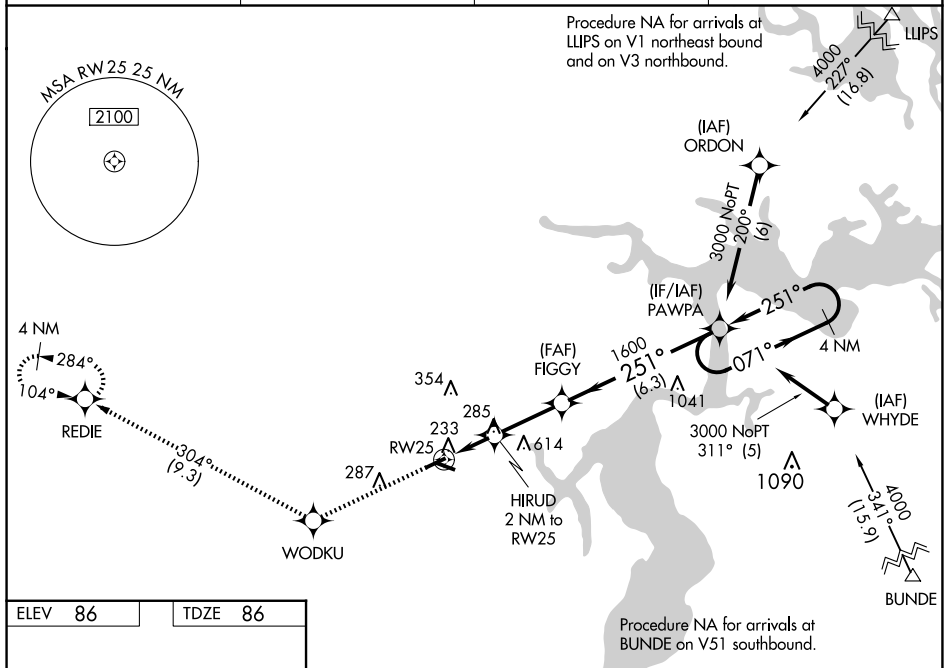
RNAV (GPS) RWY 25
HERLONG RECREATIONAL (HEG)

T Baro-VNAV NA when using Cecil altimeter setting. For uncompensated Baro-VNAV systems, procedure NA below -15°C (5°F) or above 54°C (130°F). DME/DME RNP-0.3 NA.

A NA When local altimeter setting not received, use Cecil altimeter setting: increase all DA 13 feet and all MDA 20 feet; increase LNAV Cat C and D visibility $\frac{1}{8}$ mile. Procedure NA at night for Cat C/D aircraft. Night landing: Rwy 7, 11, 29 NA. Helicopter visibility reduction below $\frac{3}{8}$ SM NA.

MISSED APPROACH: Climb to 2000 direct WODKU and on track 304° to REDIE and hold.

AWOS-3 119.275	JACKSONVILLE APP CON 127.775 377.075	GCO 121.725	UNICOM 123.0 (CTAF) 0
--------------------------	--	-----------------------	---------------------------------



MIRL Rwy 25

Holding Pattern: 4 NM Holding Pattern, 3000 ft, GP 3.00° TCH 40'

Navigation Aids: WODKU, REDIE, FIGGY, PAWPA, HIRUD, RW25

Altitudes: 251°, 1600, 3000

Distances: 2 NM, 2.7 NM, 6.3 NM

CATEGORY	A	B	C	D
LPV DA	378-1	292 (300-1)		
LNAV/VNAV DA	612-1 $\frac{7}{8}$	526 (600-1 $\frac{7}{8}$)		
LNAV MDA	600-1	514 (600-1)	600-1 $\frac{3}{8}$	514 (600-1 $\frac{3}{8}$)
C CIRCLING	600-1	514 (600-1)	980-2 $\frac{3}{4}$ 894 (900-2 $\frac{3}{4}$)	980-3 894 (900-3)