

WAAS CH 50316 W16A	APP CRS 159°	Rwy Ldg TDZE 341 Apt Elev 341
--	------------------------	---

RNAV (GPS) RWY 16

HAWKINS FLD (HKS)

⚠

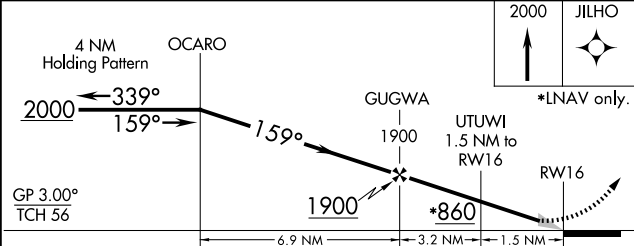
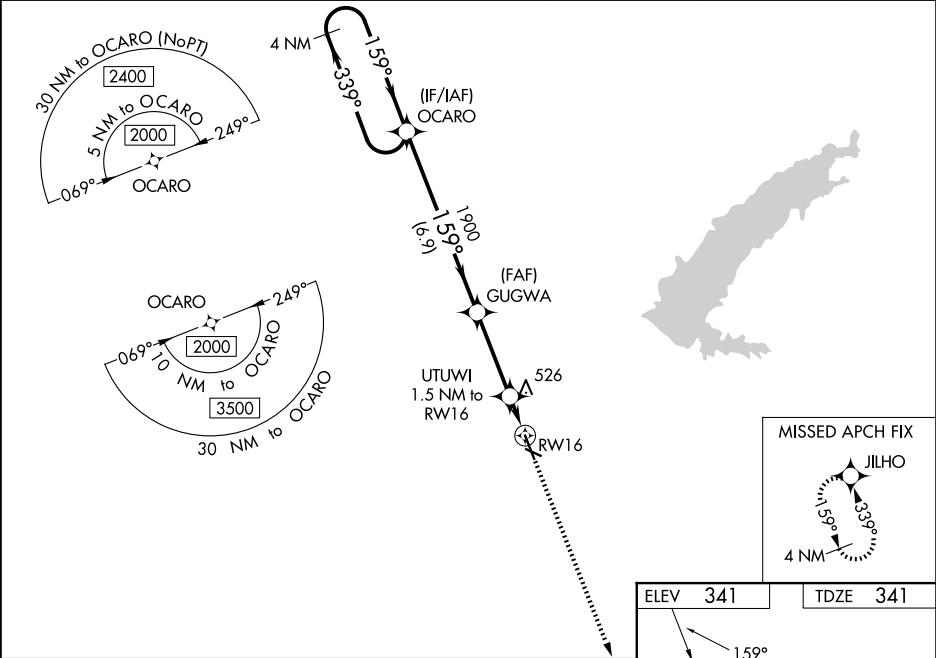
Baro-VNAV NA when using Jackson-Medgar Wiley Evers Intl altimeter setting. For uncompensated Baro-VNAV systems, LNAV/VNAV NA below -6°C (22°F) or above 54°C (130°F). DME/DME RNP-0.3 NA. When local altimeter setting not received, use Jackson-Medgar Wiley Evers Intl altimeter setting and increase all DA 19 feet and all MDA 20 feet. Increase LNAV/VNAV all Cats and LNAV Cats C/D visibilities ½ mile and Circling Cat C ¼ mile. For inop MALS when using Jackson-Medgar Wiley Evers Intl altimeter setting increase LNAV/VNAV all Cats to 1½.

MALS

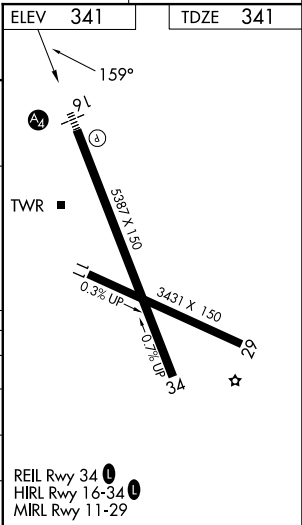
=

MISSED APPROACH:
Climb to 2000 direct JILHO and hold.

ASOS 120.625	JACKSON APP CON ★ 123.9 319.2	HAWKINS TOWER ★ 119.65 (CTAF) 0 257.8	GND CON 121.9 239.0	CLNC DEL 121.9 (When twr closed)	UNICOM 122.95
------------------------	---	---	-------------------------------	---	-------------------------



CATEGORY	A	B	C	D
LPV DA		542-½	201 (300-½)	
LNAV/VNAV DA		677-⅝	336 (400-⅝)	
LNAV MDA	780-½	439 (500-½)	780-¾	439 (500-¾)
CIRCLING	860-1 519 (600-1)	880-1 539 (600-1)	1140-2¼ 799 (800-2¼)	1320-3 979 (1000-3)



SC-4, 07 AUG 2025 to 04 SEP 2025

SC-4, 07 AUG 2025 to 04 SEP 2025