

WAAS CH 45706 W05A	APP CRS 050°	Rwy Ldg 11200 TDZE 747 Apt Elev 796
----------------------------------------	------------------------	----------------------------------------------------------------

RNAV (GPS) Y RWY 5L

INDIANAPOLIS INTL (IND)

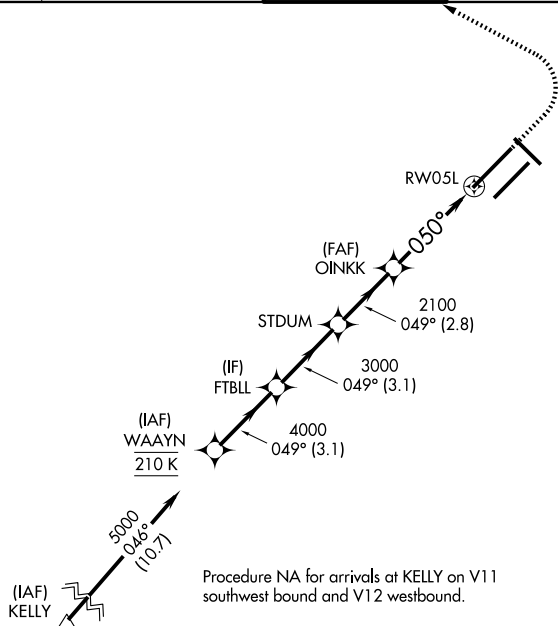
T
A

For uncompensated Baro-VNAV systems, LNAV/VNAV NA below -18°C (0°F) or above 54°C (130°F). DME/DME RNP-0.3 NA. Simultaneous approach authorized. LNAV procedure NA during simultaneous operations. Use of FD or AP providing RNAV track guidance required during simultaneous operations. For inoperative ALS, increase LNAV/VNAV all Cats visibility to 1¼ SM and increase LNAV Cat C/D visibility to 1½ SM.

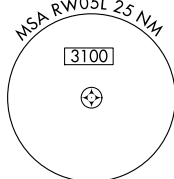


MISSED APPROACH:
Climb to 1300 then
climbing left turn to
3000 direct KEADY
and hold.

D-ATIS 134.25	INDIANAPOLIS APP CON 128.175 317.8	INDY TOWER 120.9 251.1	GND CON 121.9	CLNC DEL 128.75 251.1	CPDLC
-------------------------	----------------------------------------------	----------------------------------	-------------------------	---------------------------------	-------



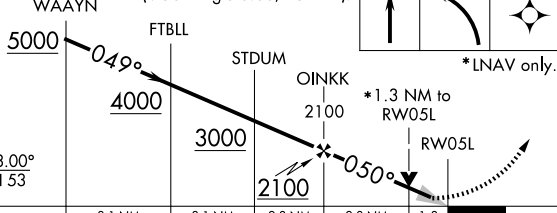
MISSED APCH FIX



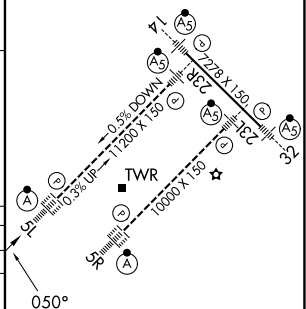
Procedure NA for arrivals at KELLY on V11 southwest bound and V12 westbound.

ELEV 796	D	TDZE 747
----------	----------	----------

VGSI and RNAV glidepath not coincident
(VGSI Angle 3.00/TCH 74).



* LNAV only.



CATEGORY		A	B	C	D
LPV	DA	947/18 200 (200-½)			
LNNAV/ VNAV	DA	1136/45 389 (400-¾)			
LNNAV	MDA	1220/24 473 (500-½)		1220/50 473 (500-1)	
CIRCLING		1420-1 624 (700-1)		1420-1¾ 624 (700-1¾)	1560-2½ 764 (800-2½)

HIRL all Rwy's
TDZ/CL Rwy's 5L and 5R

RNAV (GPS) Y RWY 5L