

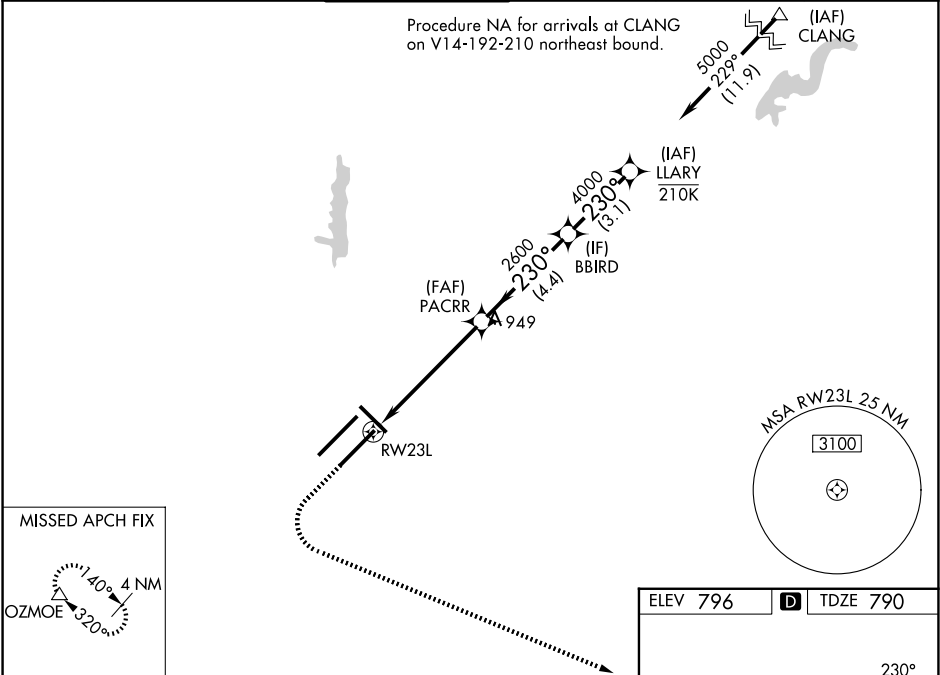
WAAS CH 86406 W23A	APP CRS 230°	Rwy Ldg 10000 TDZE 790 Apt Elev 796
--	------------------------	--

RNAV (GPS) Y RWY 23L

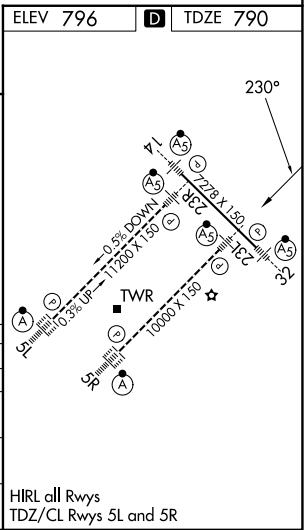
INDIANAPOLIS INTL (IND)

RNP APCH - GPS.	MALSR 	MISSED APPROACH: Climb to 1500 then climbing left turn to 3000 direct OZMOE and hold.
⚠ LNAV procedure NA during simultaneous operations. Simultaneous approach authorized. Use of FD or AP required during simultaneous operations. For uncompensated Baro-VNAV systems, LNAV/VNAV NA below -20°C or above 54°C. For inop ALS, increase LNAV/VNAV all Cats visibility to RVR 4500. * RVR 1800 authorized with use of FD or AP or HUD to DA.		

D-ATIS 134.25	INDIANAPOLIS APP CON 128.175 317.8	INDY TOWER 120.9 251.1	GND CON 121.9	CLNC DEL 128.75 251.1	CPDLC
-------------------------	--	----------------------------------	-------------------------	---------------------------------	-------



1500	3000	OZMOE	VGSI and RNAV glidepath not coincident (VGSI Angle 3.00/TCH 71).			
CATEGORY	A		B		C	D
LPV DA*	990/24 200 (200-½)					
LNAV/ VNAV	DA		1078/24 288 (300-½)			
LNAV MDA	1180/24 390 (400-½)			1180/35 390 (400-¾)		
CIRCLING	1420-1 624 (700-1)			1420-1¾ 624 (700-1¾)		1560-2½ 764 (800-2½)



EC-2, 07 AUG 2025 to 04 SEP 2025

EC-2, 07 AUG 2025 to 04 SEP 2025