

APP CRS	Rwy Ldg	11200
230°	TDZE	783
	Apt Elev	796

RNAV (RNP) Z RWY 23R  
INDIANAPOLIS INTL (IND)

**V** For uncompensated Baro-VNAV systems, procedure NA below -18°C (0°F) or above 54°C (130°F). GPS Required. For inoperative ALS, increase RNP 0.15 all Cats visibility to RVR 6000 and increase RNP 0.30 all Cats visibility to 1 3/8 SM. Simultaneous approach authorized.

MALSR



**MISSED APPROACH:**  
Climb to 1200 then  
climbing right turn to  
3000 direct KEADY  
and hold.

D-ATIS  
**134.25**

INDIANAPOLIS APP CON  
128,175 317.8

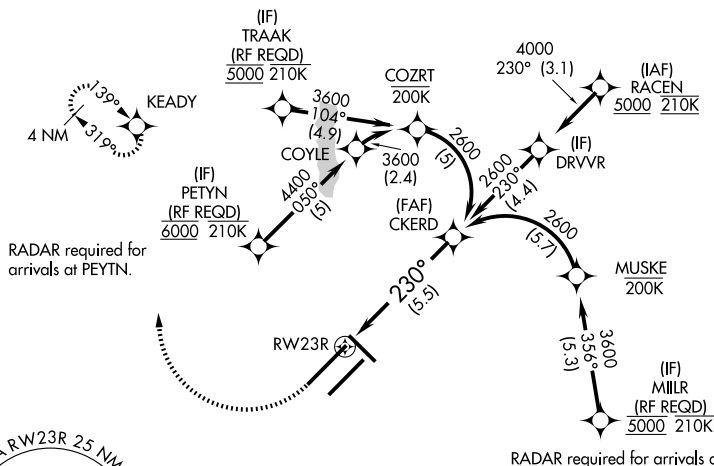
INDY TOWER  
120.9 251.1

GND CON  
**121.9**

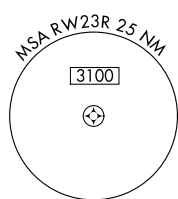
CLNC DEL  
128.75 251.1

CPDLC

RADAR required for arrivals at TRAAK.



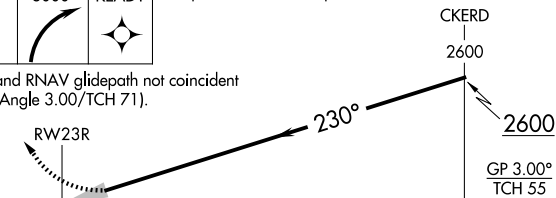
RADAR required for arrivals at MILLR.



1200	3000	KEADY	See planview for multiple IF locations.
------	------	-------	---



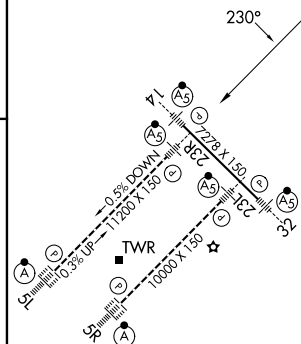
VGSI and RNAV glidepath not coincident  
(VGSI Angle 3.00/TCH 71).



CATEGORY	A	B	C	D
RNP 0.15 DA		1147/40	364 (400-3/4)	
RNP 0.30 DA		1206/50	423 (500-1)	

AUTHORIZATION REQUIRED

ELEV	796	<b>D</b>	TDZE	783
------	-----	----------	------	-----



HIRL all Rwys  
TDZ/CL Rwys 5L and 5R

RNAV (RNP) Z RWY 23R