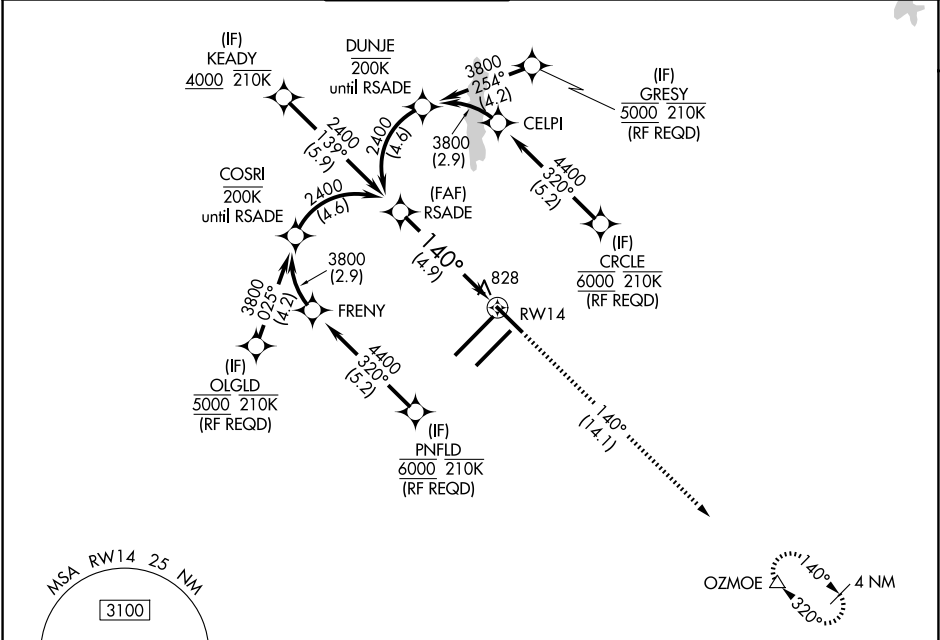


APP CRS	Rwy Ldg	7278
140°	TDZE	796
	Apt Elev	796

RNAV (RNP) Z RWY 14
INDIANAPOLIS INTL (IND)

RNP AR APCH.			<div>MALSR</div> <div></div>	MISSED APPROACH: Climb to 3000 on track 140° to OZMOE and hold.		
<div></div> For uncompensated Baro-VNAV systems, procedure NA below -18°C or above 54°C.						
D-ATIS 134.25	INDIANAPOLIS APP CON 128.175 317.8	INDY TOWER 120.9 251.1	GND CON 121.9	CLNC DEL 128.75 251.1	CPDLC	



ELEV 796		D		TDZE 796	
CATEGORY	A	B	C	D	
RNP 0.14 DA	1135/26 339 (400-½)				
RNP 0.30 DA	1192/45 396 (400-¾)				
AUTHORIZATION REQUIRED					
HIRL all Rwys TDZ/CL Rwys 5L and 5R					

EC-2, 07 AUG 2025 to 04 SEP 2025

EC-2, 07 AUG 2025 to 04 SEP 2025