

(MAREO5.MAREO) 24361
MAREO FIVE DEPARTURE

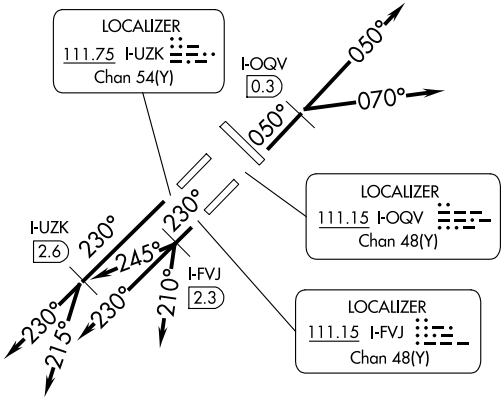
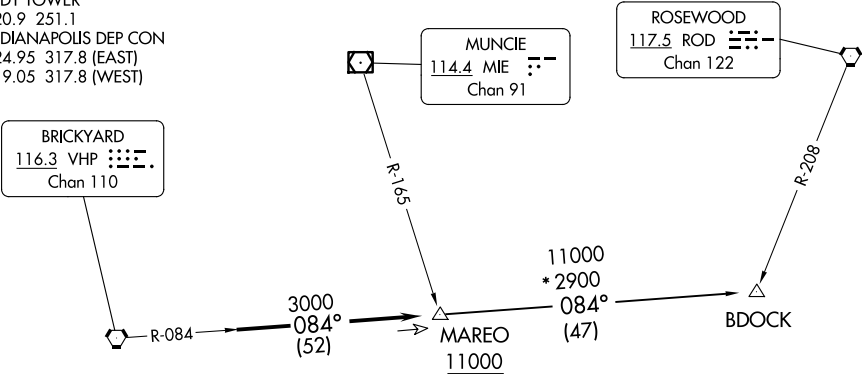
AL-203 (FAA)

INDIANAPOLIS INTL (IND)
INDIANAPOLIS, INDIANA

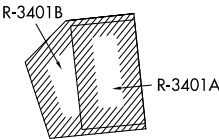
D-ATIS
134.25
CLNC DEL
128.75 251.1
CPDLC
GND CON
121.9
INDY TOWER
120.9 251.1
INDIANAPOLIS DEP CON
124.95 317.8 (EAST)
119.05 317.8 (WEST)

TAKEOFF MINIMUMS
Rwys 5L/R, 14, 23L/R, 32: Standard.

TOP ALTITUDE:
(JETS) 5000
(PROPS) 3000



NOTE: RADAR required.
NOTE: Select appropriate localizer/DME frequency/channel prior to departure.
NOTE: Turbojets accelerate to 250K until reaching 10000, if unable advise ATC.
NOTE: Assigned to aircraft with a requested altitude of 11000 or above.



(NARRATIVE ON FOLLOWING PAGE)

NOTE: Chart not to scale.

MAREO FIVE DEPARTURE
(MAREO5.MAREO) 01FEB18

INDIANAPOLIS, INDIANA
INDIANAPOLIS INTL (IND)

EC-2, 07 AUG 2025 to 04 SEP 2025

EC-2, 07 AUG 2025 to 04 SEP 2025