

ILS or LOC RWY 5R  
INDIANAPOLIS INTL (IND)

**MISSED APPROACH:** Climb to 1500 then climbing right turn to 3000 on heading 148° and on VHP VORTAC R-136 to OZMOE INT/VHP 20.1 DME and hold.

D-ATIS	INDIANAPOLIS APP CON	INDY TOWER	GND CON	CLNC DEL	CPDLC
134.25	128.175 317.8	120.9 251.1	121.9	128.75 251.1	

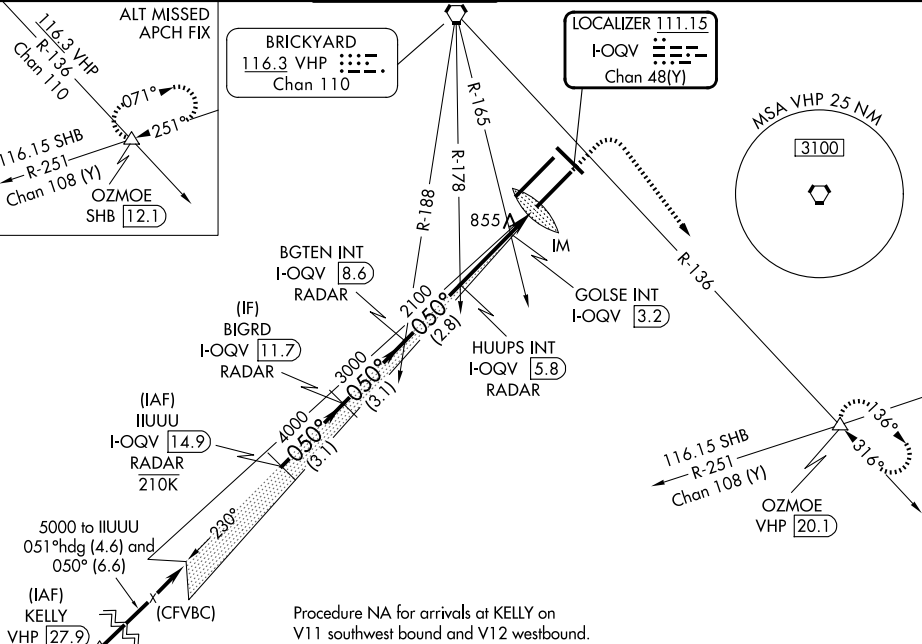


Figure 1: Example of a 5L/5R ILS. The figure includes a plan view diagram of the ILS path, a table of frequencies and minima, and a table of minima for dual VOR receivers or DME required.

**Plan View Diagram:** Shows the ILS path from 5000 feet to 2100 feet. The heading is 050°. The track width is 3.00°. The distance markers are 3.1 NM, 2.8 NM, 2.6 NM, 1.2 NM, and 0.2 NM. The diagram also shows the GOLSE INT (3.2) and I-OCV (1.8) points.

**Table of Frequencies and Minima:**

CATEGORY	A	B	C	D
S-ILS 5R	991/18	200 (200-½)		
S-LOC 5R	1240/24	449 (500-½)	1240/45	449 (500-¾)
CIRCLING	1420-1	624 (700-1)	1420-1¾ 624 (700-1¾)	1560-2½ 764 (800-2½)

**GOLSE FIX MINIMUMS (DUAL VOR RECEIVERS or DME REQUIRED)**

S-LOC 5R	1160/24	369 (400-½)	1160/35	369 (400-¾)
CIRCLING	1420-1	624 (700-1)	1420-1¾ 624 (700-1¾)	1560-2½ 764 (800-2½)

**Table of Minima:**

Knots	45	60	75	90	105
Min:Sec	5:20	4:00	3:12	2:40	2:17

EC-2, 07 AUG 2025 to 04 SEP 2025